



Copeland™ / Copeland™ EAS™
Humeral Resurfacing Head

BIOMET®

Copeland™ Humeral Resurfacing Head

Clinically Proven **Results**¹⁻⁴

Cobalt Chrome Humeral Head

Copeland™ and Copeland™ EAS™
Optimal biocompatibility and
excellent wear characteristics

Two Undersurface Coating Options

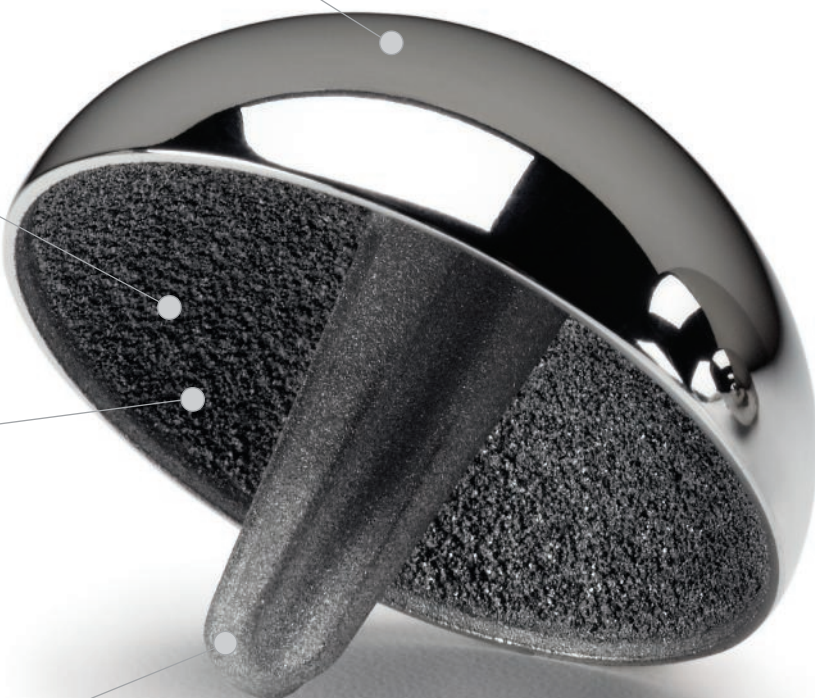
- Titanium plasma sprayed MacroBond® undersurface coating for press-fit or cemented use
- Hydroxyapatite (HA) sprayed Interlok® undersurface coating for press-fit use

Easy Conversion

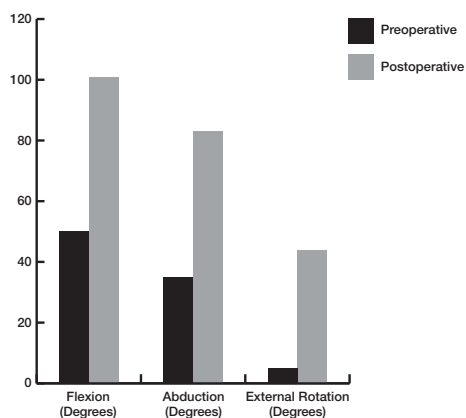
Copeland™ and Copeland™ EAS™
No penetration of medullary
canal allows for easy conversion
to stemmed implant

Fluted and Tapered Post

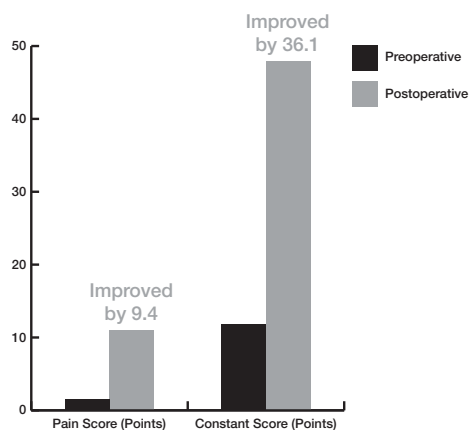
Copeland™ and Copeland™ EAS™
Fluted post provides for cement
mantle; blast finish tapered post
provides for immediate press-fit



Clinical History (ROM)¹

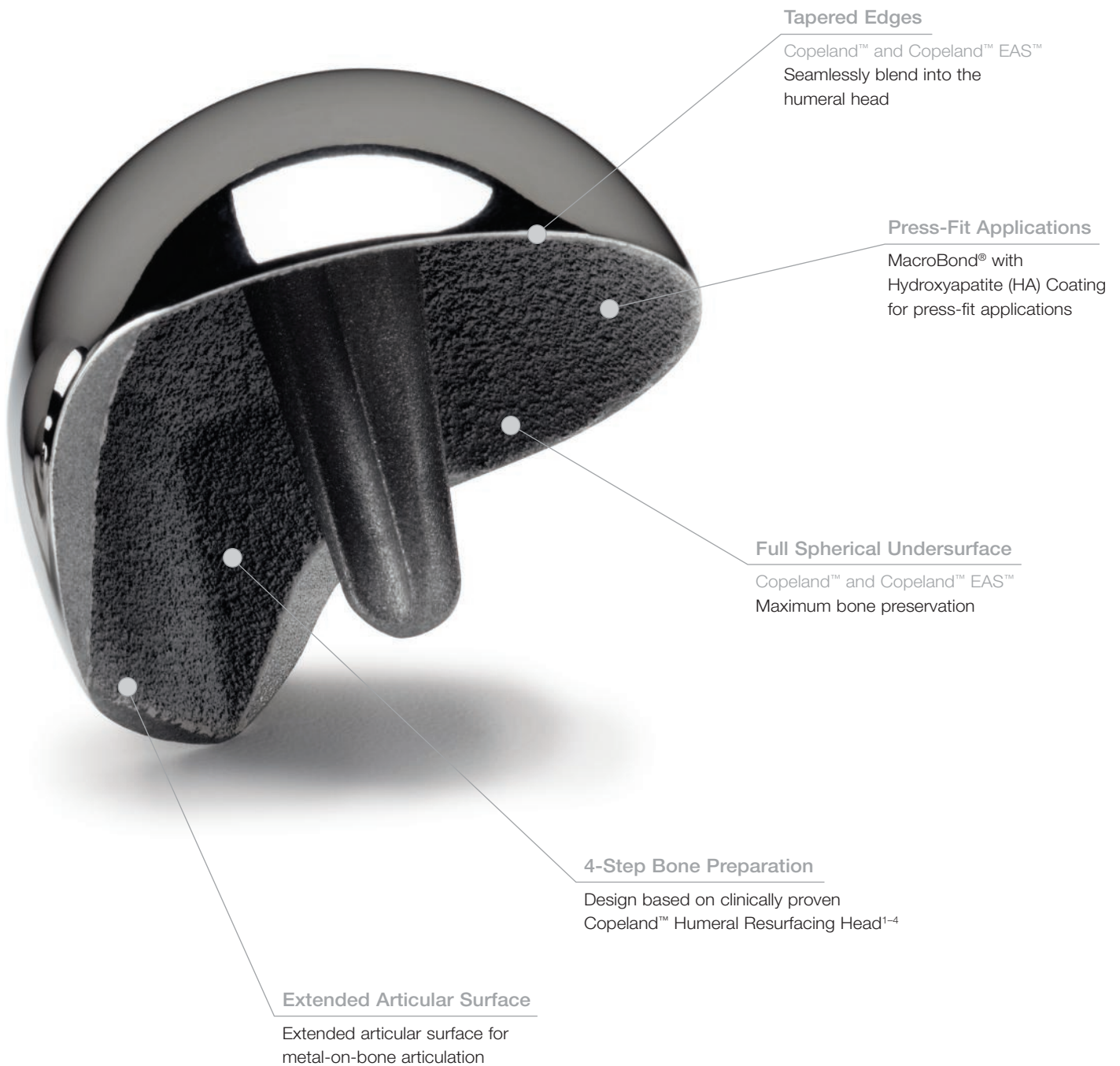


Pain Improvement Score¹



Copeland™ EAS™ Humeral Resurfacing Head

Only Resurfacing **Design** for **Cuff Tear** Arthropathy



References

1. Levy, O. *et al.* Copeland Surface Replacement Arthroplasty of the Shoulder in Rheumatoid Arthritis. *Journal of Bone and Joint Surgery*. 86-A: 512–18, 2004.
2. Funk, L. *et al.* Copeland Surface Replacement Arthroplasty for Avascular Necrosis of the Humeral Head. *Journal of Bone and Joint Surgery*. 86-B(Suppl 1): 99, 2004.
3. Levy, O. Cementless Surface Replacement Arthroplasty of the Shoulder – 11 Years Experience. ICCS. Sydney, 1998.
4. Levy, O. and Copeland, S.A. Cementless Surface Replacement Arthroplasty of the Shoulder: 5- to 10-year Results with the Copeland Mark-2 Prosthesis. *Journal of Bone and Joint Surgery*. 83-B: 213–21, 2000.

All trademarks herein are property of Biomet, Inc. or its subsidiaries unless otherwise indicated.

This material is intended for the sole use and benefit of the Biomet sales force and physicians. It is not to be redistributed, duplicated or disclosed without the express written consent of Biomet.

For product information, including indications, contraindications, warnings, precautions and potential adverse effects, see the package insert and Biomet's website.



P.O. Box 587, Warsaw, IN 46581-0587 • 800.348.9500 ext. 1501
©2008 Biomet Orthopedics • www.biomet.com
Form No. BOI0313.0 • REV113008