



UNITUS™

Staple System



1 • UNITUS Staple System

Learn More >



UNITUS™ Staple System

The UNITUS™ Staple System is a Nitinol compression staple with a self-contained sterile instrument kit that is designed to be ergonomic. UNITUS Staples are available in multiple combinations of bridge width, leg lengths, and cross sections to accommodate various anatomies.

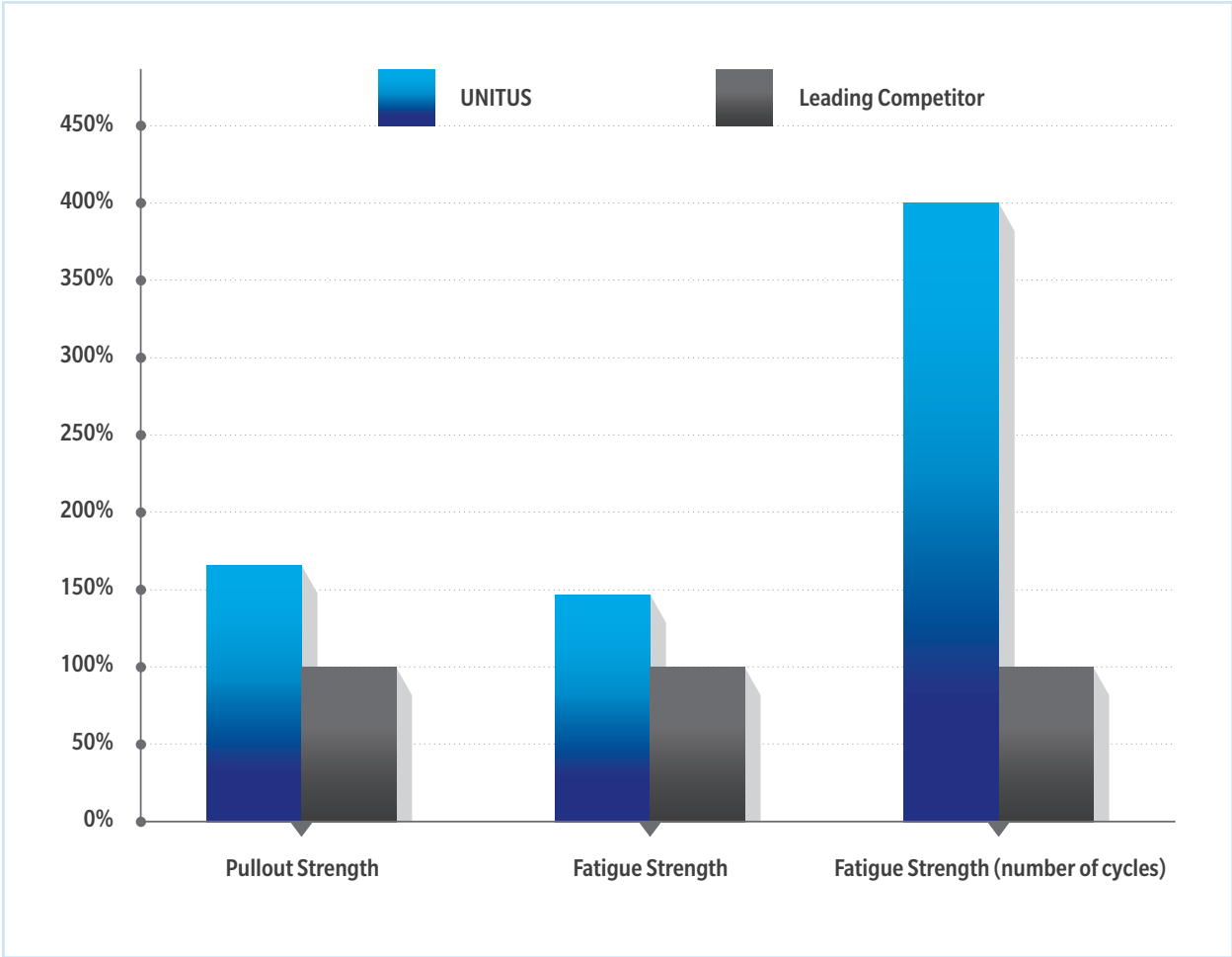
The UNITUS Staple System is designed for continuous compression, intra-operative efficiency, and comprehensive sizing options.

Indications:

The UNITUS Staple is indicated for:

- Fracture and osteotomy fixation, joint arthrodesis hand and foot
- Fixation of proximal metaphysis osteotomy
- Hand and foot bone fragment and osteotomy fixation and joint arthrodesis
- Fixation of small bone fragments (i.e., small fragments of bone which are not comminuted to the extent to preclude staple placement). These fragments may be located in long bones such as the femur, fibula and tibia in the lower extremities; the humerus, ulna or radius in the upper extremities; the clavicle and in flat bone such as the pelvis and scapula.

UNITUS Performance vs Leading Competitor



In benchtop testing against a leading competitive staple,¹ the UNITUS staple System demonstrated:

>1.6X
HIGHER PULLOUT STRENGTH

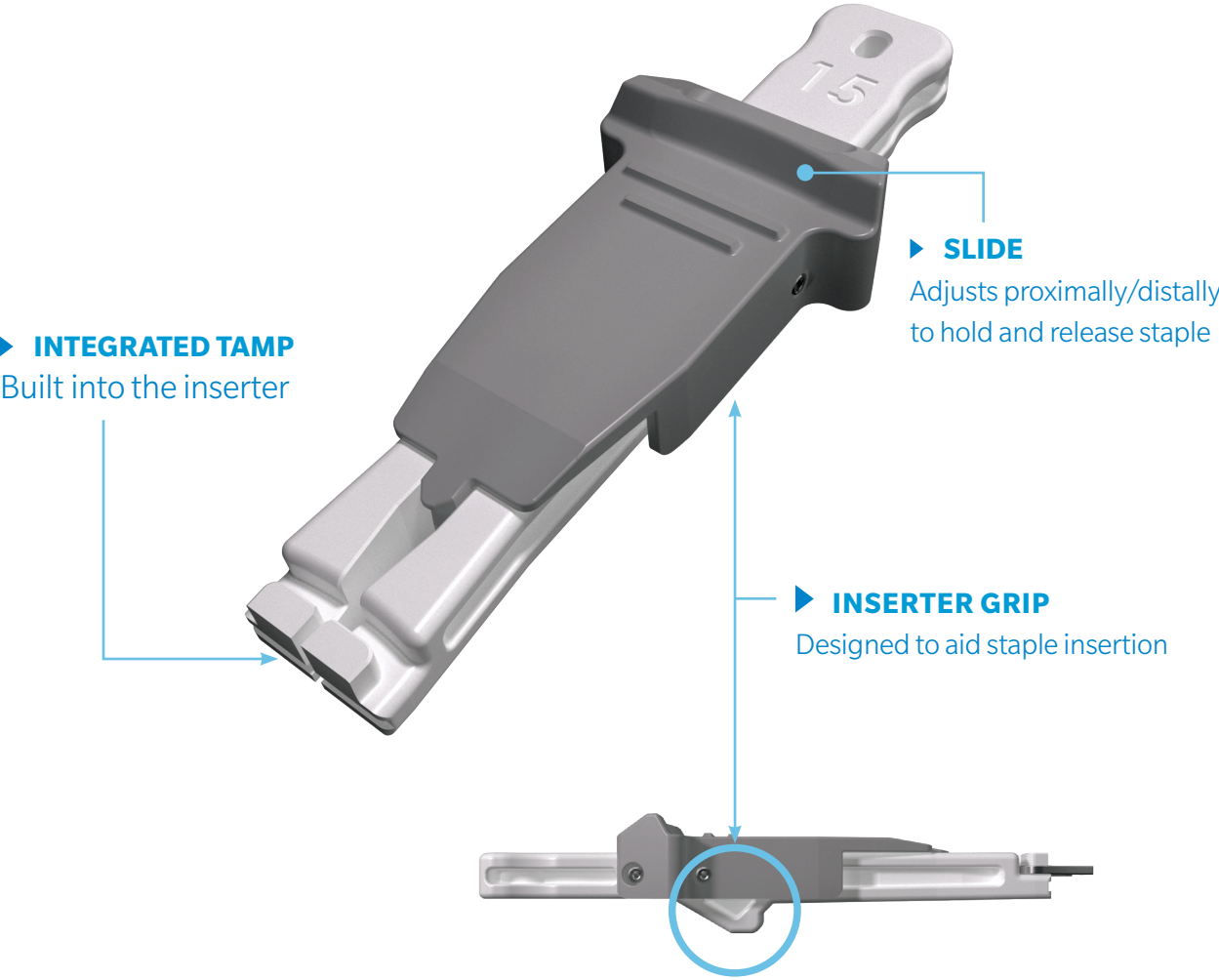
1.5X
HIGHER FATIGUE STRENGTH

4X
FATIGUE RUNOUT

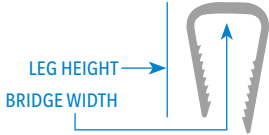
1. TR # 202234. X15 Test Report Summary. Data on File at Tyber Medical. 10/28/22.

Designed for Efficiency

Designed for intra-operative efficiency, the inserter has a built-in tamp, so the surgeons' eyes do not have to leave the field of view, streamlining the case



Comprehensive Sizes



The UNITUS staple system has 11 sizes. There are 7 bridge lengths, with standard and offset leg lengths.

<p>8</p> <p>15ZB00102</p>	<p>10</p> <p>15ZB00103</p>	<p>10</p> <p>15ZB00116</p>	<p>15</p> <p>15ZB00105</p>
<p>15</p> <p>15ZB00106</p>	<p>15</p> <p>15ZB00117</p>	<p>18</p> <p>15ZB00108</p>	<p>20</p> <p>15ZB00109</p>
<p>20</p> <p>15ZB00110</p>	<p>25</p> <p>15ZB00111</p>	<p>30</p> <p>15ZB00119</p>	

Ordering Information

PART NUMBER	DESCRIPTION	BRIDGE WIDTH	LEG LENGTH	LEG LENGTH	DRILL DIAMETER	LOCATING PIN DIAMETER	MAX COMPRESSION
15ZB00102	8X8mm	8mm	8mm	8mm	2.0mm	1.8mm	3.0mm
15ZB00103	10X8mm	10mm	8mm	8mm	2.0mm	1.8mm	3.0mm
15ZB00105	15X12mm	15mm	12mm	12mm	2.0mm	1.8mm	4.0mm
15ZB00106	15X15mm	15mm	15mm	15mm	2.0mm	1.8mm	5.0mm
15ZB00108	18X18 mm	18mm	18mm	18mm	2.7mm	2.4mm	6.0mm
15ZB00109	20X18mm	20mm	18mm	18mm	2.7mm	2.4mm	6.0mm
15ZB00110	20X20mm	20mm	20mm	20mm	2.7mm	2.4mm	7.0mm
15ZB00111	25X20mm	25mm	20mm	20mm	2.7mm	2.4mm	7.0mm
15ZB00116	10X13X15mm	10mm	13mm	15mm	2.0mm	1.8mm	5.0mm
15ZB00117	15X15X18mm	15mm	15mm	18mm	2.0mm	1.8mm	6.0mm
15ZB00119	30X20mm	30mm	20mm	20mm	2.7mm	2.4mm	8.0mm

This material is intended for health care professionals. For indications, contraindications, warnings, precautions, potential adverse effects and patient counseling information, see the package insert or contact your local representative; visit zimmerbiomet.com for additional product information.

A written surgical technique is available at www.ZimmerBiomet.com.

All content herein is protected by copyright, trademarks and other intellectual property rights, as applicable, owned by or licensed to Zimmer Biomet or its affiliates unless otherwise indicated, and must not be redistributed, duplicated or disclosed, in whole or in part, without the express written consent of Zimmer Biomet. ©2023 Zimmer Biomet



4102.2-US-en-Issue Date-2023-06
VV-09661



Legal Manufacturer

Tyber Medical LLC
83 South Commerce Way, Ste. 310
Bethlehem, PA 18017
Phone: (866) 761-0933
Fax: (866) 889-9914
www.tybermedical.com



Zimmer Biomet, Inc.

1800 W. Center Street
Warsaw, IN 46580 USA
Tel: 1-800-348-2759
Fax: 574-372-3968
www.zimmerbiomet.com