

Persona IQ[®]

THE SMART KNEE[™]

CANARY canturio[™] Tibial Extension with CHIRP[™] System Setting Up Your Home Base Station Quick Start Guide

Read this guide carefully. For full system instructions, pre-cautions and warnings refer to the Patient Manual. If you have additional questions after reading this manual, contact your doctor.

Setting Up Your CHIRP Home Base Station

CANARY canturio™ Tibial Extension with CHIRP™ System

Make sure your package contains the items shown below. The Home Base Station may be operated between 5° C and 40° C (41-104° F).

You must have a computer with at least one USB connection port as shown below.



You must also have the following:

- Windows 10
- For Macs: OS 10.15 or higher
- A wireless Internet connection
- Microsoft Edge or Google Chrome version 42.17134.1.0 or Chrome browser version 71.0.3578.80
- Your Canary Medical Username and Password that you set up when you created your patient account
- Your home Wi-Fi Network Name (SSID) and Wi-Fi Password



USB connection port on the side of your computer

1. Use the USB Cable to connect the Home Base Station to your computer as shown below.



NOTE: Apple laptops from 2018 and later do not have USB-A ports. In order to use the USB cable that was provided for use with the Base Station, you need a USB-C adapter.

PRE-CAUTION: Do not place your Home Base Station in direct sunlight.

CAUTION: Do not place your Home Base Station directly on or close to a heater which may cause electronics to overheat.

2. On your computer, go to the Canary Medical Website (canarymedical.com).
3. Select the “Login” button.
4. The Canary Patient Portal Login screen will appear.
5. Log in using your Canary Medical Username (your email) and Password.
Reminder: You set up your username and password when you set up your Canary Medical account.
6. Click either the Microsoft Store (for Android devices) or App Store (for iOS devices) button next to “Setup Base Station” as circled in the screenshot example below.



7. Microsoft Store Users

- a. Clicking on the Microsoft button takes you to the BSST App in the Microsoft Store. Click “Get” to download the free Base Station Setup Tool (BSST) App.
- b. Click “Open Microsoft Store.”
- c. Click “Get” again to begin the download.
- d. Click “Install.”
- e. You will see that the Base Station Setup Tool is downloading on the screen.
- f. When the download is finished, click “Launch.”
- g. The first time you launch the BSST App, you will be asked to install a FTDI driver as shown in the screenshot example below. Click “Ok” to install the driver and “Ok” to make changes to your computer.

NOTE: You need administrative privileges on your computer to allow the BSST App to install the driver.



8. App Store Users

- a. Clicking on the App Store button takes you to the BSST App in the Mac App Store Preview.
- b. If a dialog box to open the Mac App Store does not automatically appear, click on the “View in Mac App Store” link. You will receive a prompt to open the App Store.
- c. Open the App Store.
- d. You will be asked to sign in if you are not already logged in. Enter your Apple username and password to continue the download.
- e. Click “Get” and then click “Install App” to download the free Base Station Setup Tool App.
- f. You will see a screen showing that the Base Station Setup Tool is downloading.
- g. When the download is finished, click “Open.”
- h. The first time you launch the BSST App, you will be asked to install a FTDI driver. Click “OK” to install the driver and “OK” to make changes to your computer as shown in the screenshot example below.

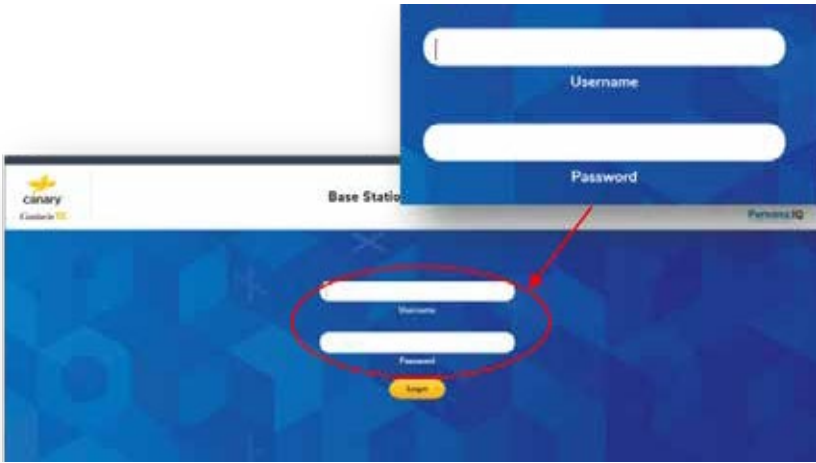


NOTE: You need administrative privileges on your computer to allow the BSST App to install the driver.

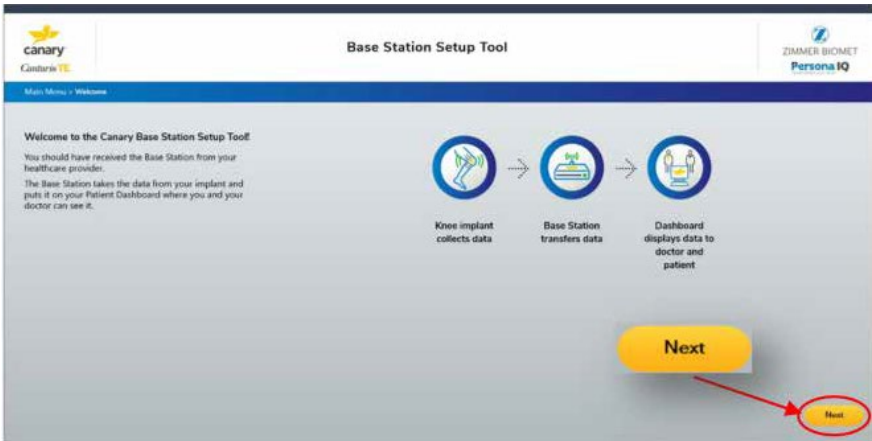
If the FTDI Driver install fails, please

SmartKneeSupport@zimmerbiomet.com or call **844-799-8208**.

9. You should be at the screen below. Enter your username and password.

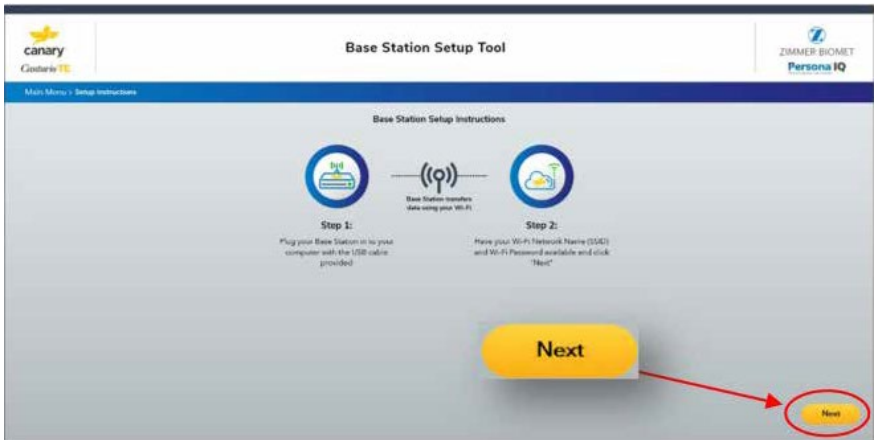


10. You will see the following screen. Read the information and click “Next.”

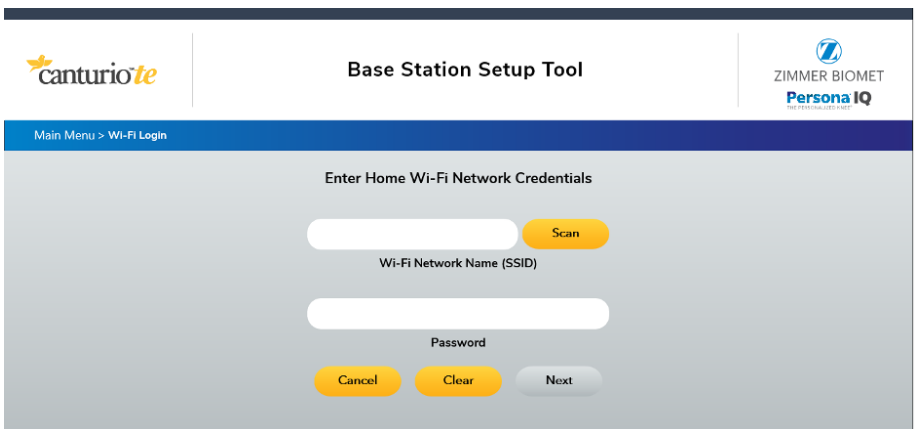


NOTE: If you are not able to see the button to proceed to the following screen, scroll to the bottom of the screen.

11. You will see the following screen. Read the directions and ensure you have connected your equipment correctly. Click “Next.”



12. Enter your home Wi-Fi Network Name (SSID) and Wi-Fi Password and click “Next” as shown in the screenshot example below. Alternatively, you may click the “Scan” button to choose from a list of nearby Wi-Fi networks detected by your system. If you choose to do so and select a network from the list, the SSID box will be pre-filled for you, and you can enter the Wi-Fi Password and proceed.



13. When you see the screen below, your Base Station is successfully connected. Click “Next.”

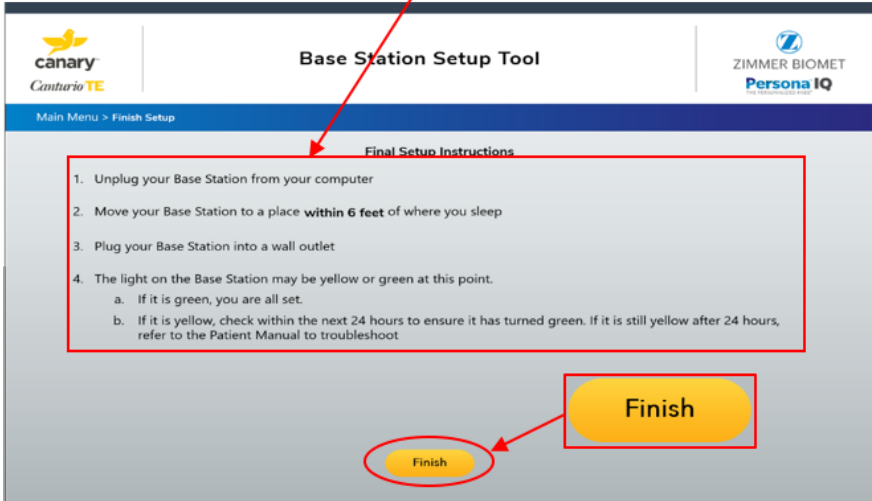


14. When you see the “Final Setup Instructions” as shown in the screenshot example on the following page, disconnect the USB end of the Cable from your computer. Leave the other end plugged into the Base Station.

Follow the instructions on the screen. If you need help, the pictures on the following pages show you how to make the connections described on the screen.

When you have completed all the steps, click “Finish” as shown on the screenshot example on the following page. You’re all set!

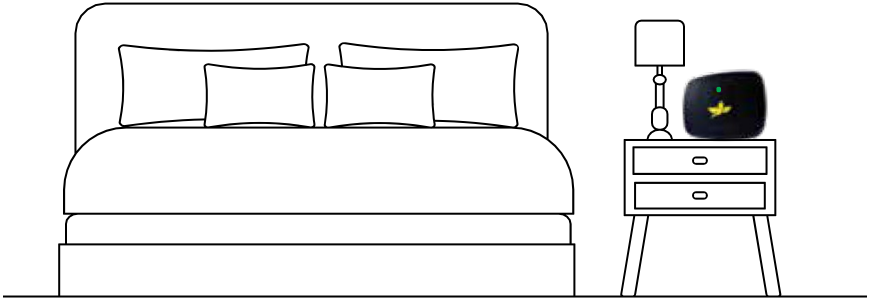
1. Unplug your Base Station from your computer
2. Move your Base Station to a place **within 6 feet** of where you sleep
3. Plug your Base Station into a wall outlet
4. The light on the Base Station may be yellow or green at this point.
 - a. If it is green, you are all set.
 - b. If it is yellow, check within the next 24 hours to ensure it has turned green. If it is still yellow after 24 hours, refer to the Patient Manual to troubleshoot



This photo shows how to plug the USB end of the Cable into the Wall Plug Adapter.



Move the Home Base Station, connected to Cable and Wall Plug Adaptor, to a location **within 6 feet of your sleeping area** and **plug it into a wall outlet**.



The light on the front of the Home Base Station will be yellow as it establishes the connection with your Wi-Fi and the Canary Medical website and will turn to a solid green when it is successfully connected.

Operating Your Home Base Station

Make sure your Home Base Station is correctly located in its permanent location within 6 feet of your typical sleep location, plugged in to a wall outlet, and connected to your home Internet system. That's all you need to do.

Your CHIRP system with Home Base Station will operate automatically without further input from you.

After your surgery, your system will collect, store, and transmit information from your implant. Your doctor will be able to view information about your activity levels, and so will you. Just go to your Patient Dashboard on the Canary Medical website.

NOTE: If you change your wireless Internet connection, for example, if you move or change Internet providers, you will need to re-do the Base Station Setup steps in this section.



**To learn more about Persona IQ®,
email SmartKneeSupport@zimmerbiomet.com
or call 844-799-8208.**

Jane Canturio is an imaginary patient with a fabricated surname.

Canary Medical Logo, Canary Medical, CANARY canturio, Canturio, and CHIRP are the exclusive property of Canary Medical and its affiliates.

Persona IQ® is a registered trademark of Zimmer, Inc. The Smart Knee™ is a trademark of Zimmer, Inc. All other trademarks are the property of respective owners.

Apple and the Apple logo are registered trademarks of Apple, Inc. App Store is a registered service mark of Apple, Inc. Microsoft and the Microsoft Store logo are trademarks of Microsoft Corporation.

Not all patients are candidates for this product and/or procedure. Only a medical professional can determine the treatment appropriate for your specific condition. Appropriate post-operative activities and restrictions will differ from patient to patient. Talk to your surgeon about whether joint replacement is right for you and the risks of the procedure, including the risk of implant wear, infection, loosening, breakage or failure, any of which could require additional surgery.

©2022 Canary Medical Inc. All Rights Reserved.

canturio™ Legal Manufacturer:

Canary Medical USA LLC

2710 Loker Ave. West, Suite 350
Carlsbad, CA 92010

Customer Service: 1-833-692-2627
canarymedical.com
support@canarymedical.com

canturio™ Exclusively Distributed by:

Zimmer, Inc.

1800 West Center St.
Warsaw, Indiana 46581-0587
USA.zimmerbiomet.com

Persona® Knee Legal Manufacturer:

Zimmer, Inc.

1800 West Center St.
Warsaw, Indiana 46581-0587
USA
zimmerbiomet.com