



Surgical Technique

Avitus® DragonWing™

Large Volume MIS Autograft Delivery

Indications and Contraindications

Indications For Use

The Avitus® DragonWing Large Volume Autograft Delivery System is intended:

1. To be used for the delivery of autograft or hydrated allograft bone graft material to an orthopaedic surgical site.

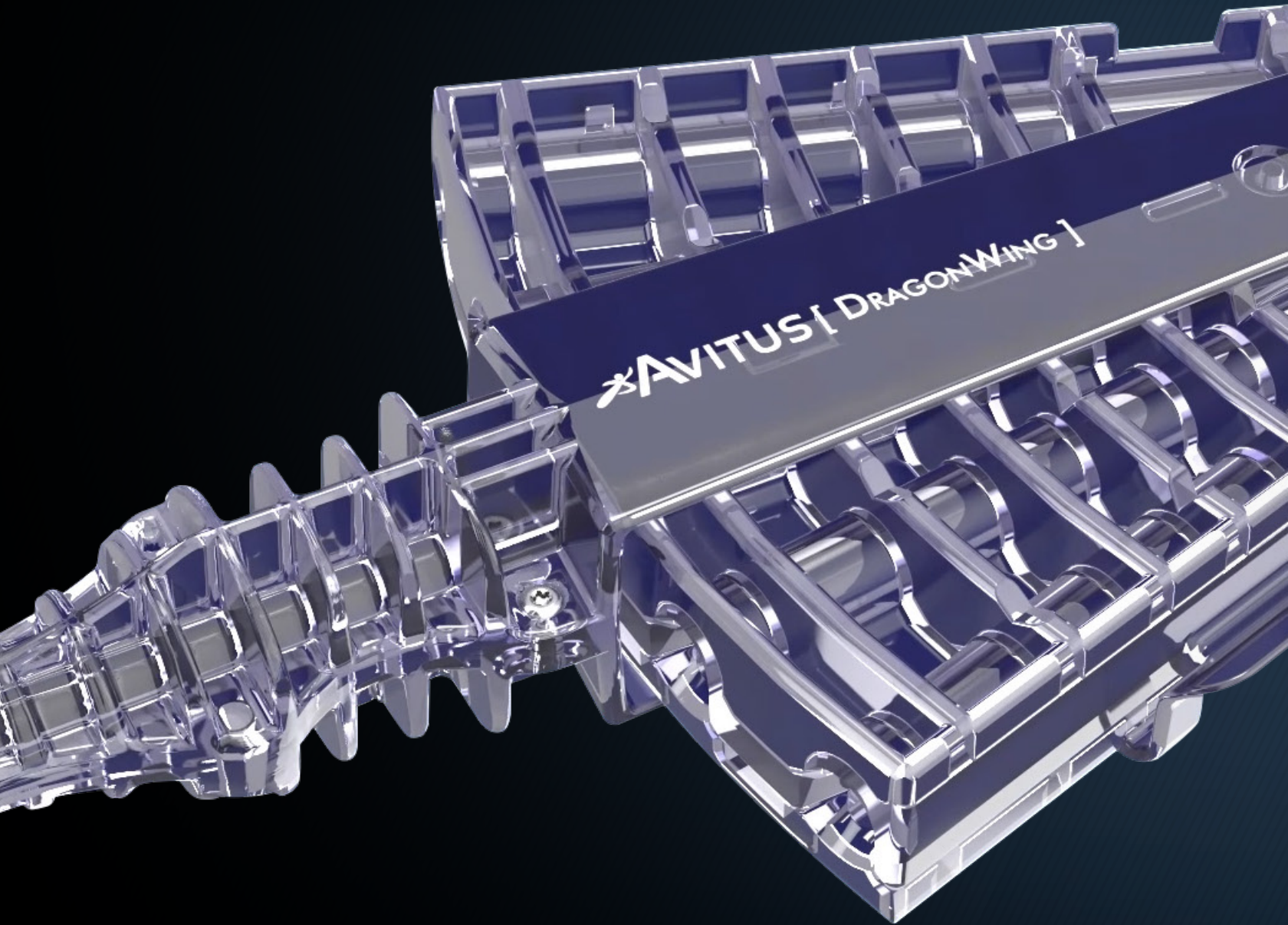
Contraindications

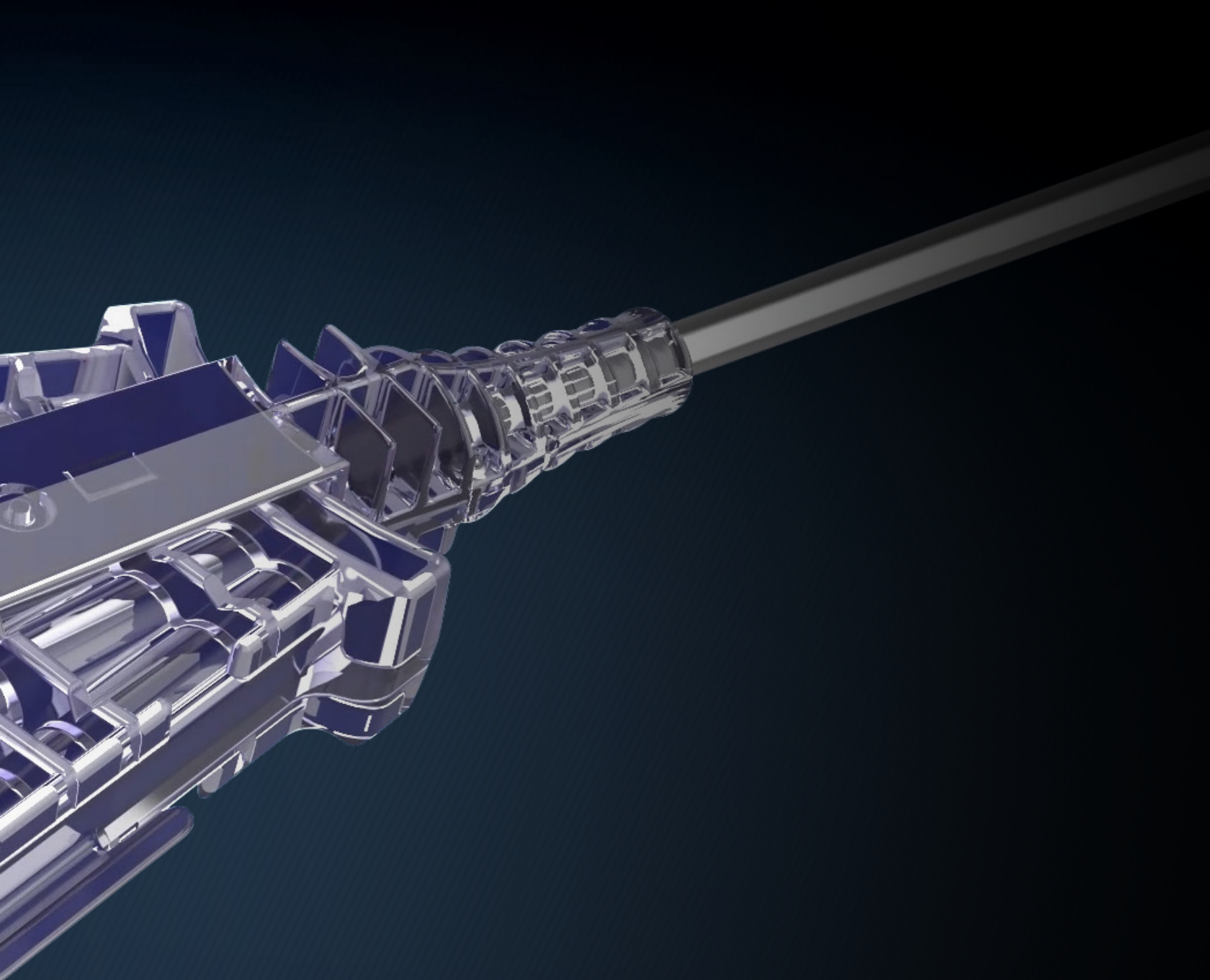
1. Patients who are not a candidate for bone graft delivery.
2. The device is intended to be used by a physician familiar with the possible side effects, typical findings, limitations, indications, and contraindications of bone graft delivery.



Avitus[®] DragonWing[™]

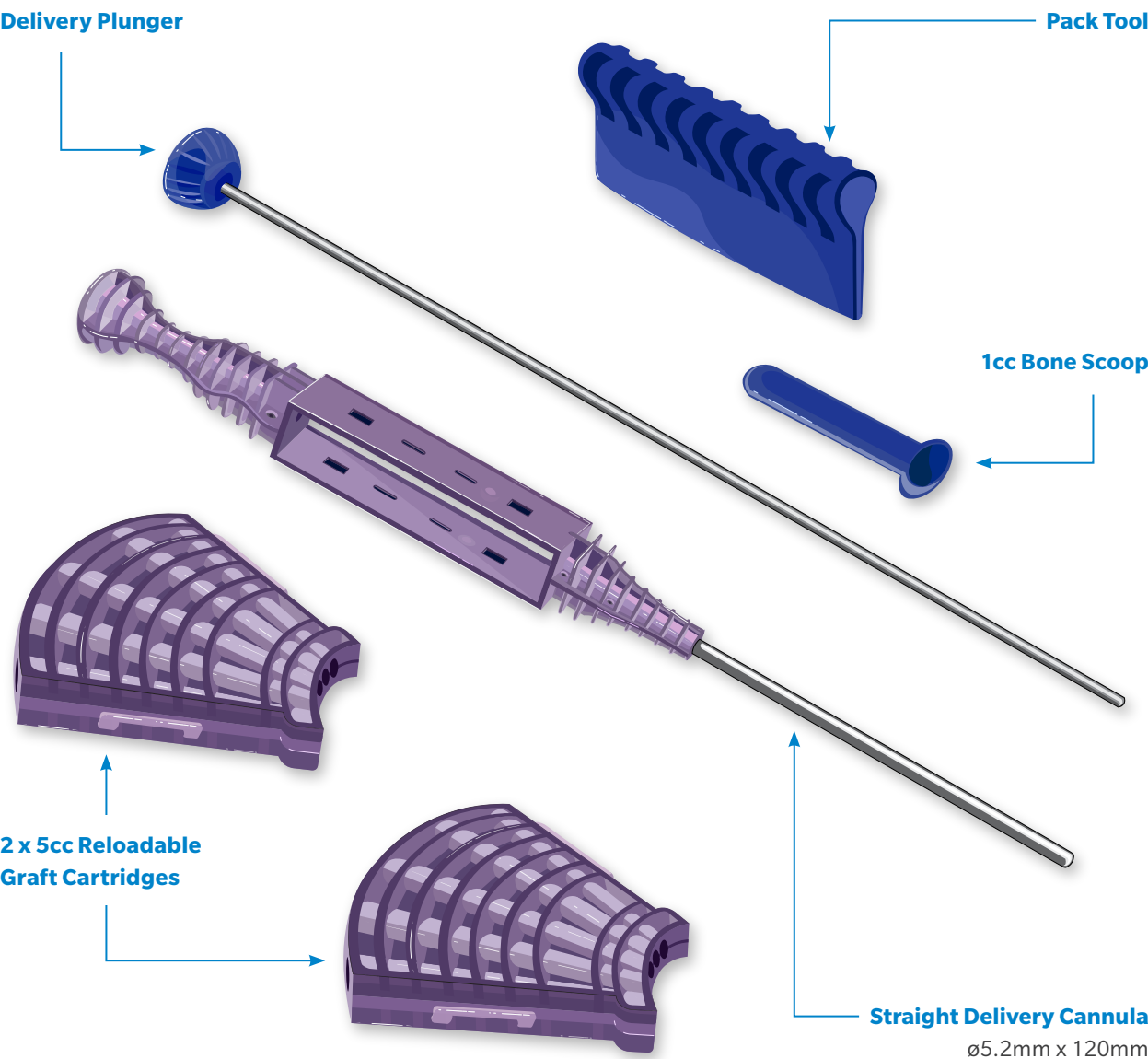
Large Volume MIS Autograft Delivery





**A minimally invasive, large volume
delivery experience for gold-standard
autologous bone graft**

DragonWing System Content



Ordering Information

Part#	Description	Volume / Size
AD-5CH-5.2-120	Avitus DragonWing Autograft Delivery	5cc of Graft
		ø5.2mm x 120mm - Straight Delivery Cannula

Usage Guidelines



1. Loading the graft cartridge

Use the Bone Scoop to obtain a level scoop of bone graft (Fig. 1a). use pack tool to remove excess graft material (Fig. 1b, 1c).

NOTE: Use the pack tool to remove any excess graft from the scoop.

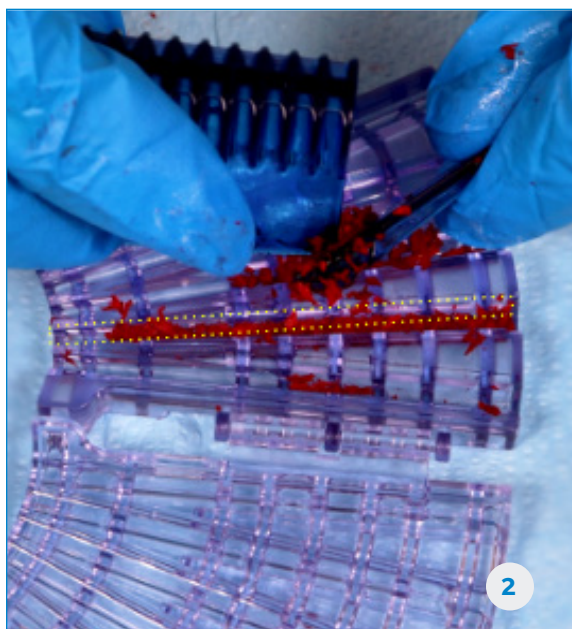


Usage Guidelines

2. Placing the autograft in the cartridge

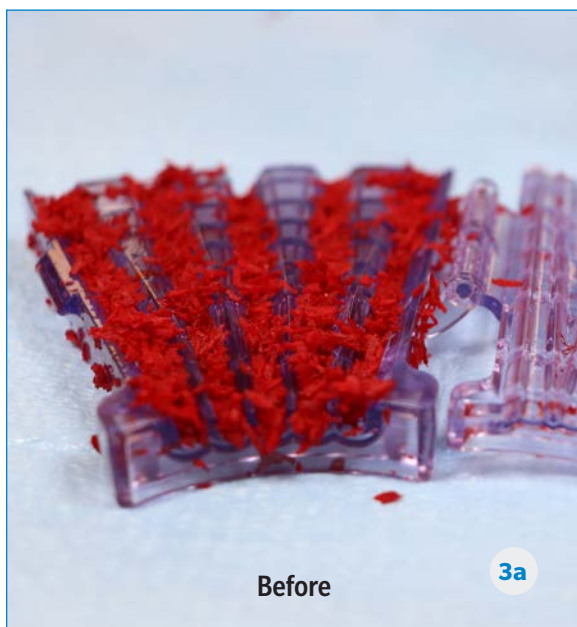
Distribute the bone graft along the length of the delivery channel from the scoop (Fig. 2). All five channels packed equals 5cc of graft volume.

NOTE: Use pack tool to align the graft into a straight line.



3. Compressing graft into Channel

Using the Pack Tool, make sure the bone graft* is fully compressed into each delivery channel. (Fig. 3a, 3b).



Before



During compression

Usage Guidelines

4. Properly packed autograft

This is what properly packed graft cartridge should look like; all 5 channels packed (Fig. 4).

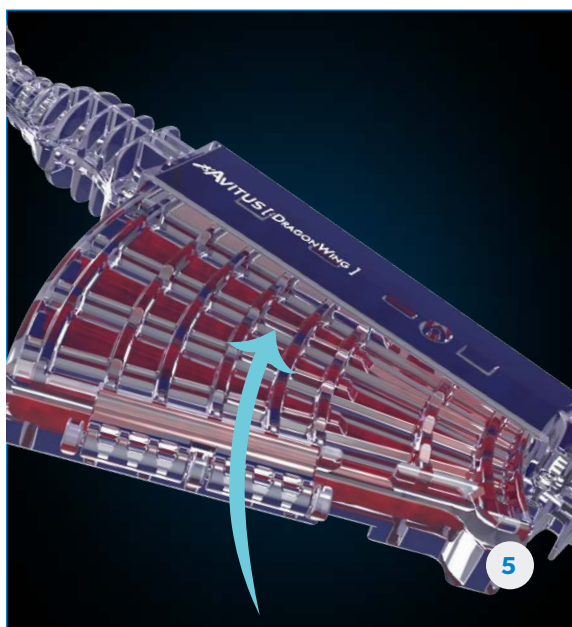
Notice no bone graft on the chamfered or angled lead-in features of the delivery channels.

NOTE: if using crushed allograft, hydrating with blood or bma is recommended.



5. Connect the graft cartridge to the delivery cannula (fig. 5).

NOTE: An audible click signifies the first delivery channel is aligned to the delivery cannula and ready for delivery.

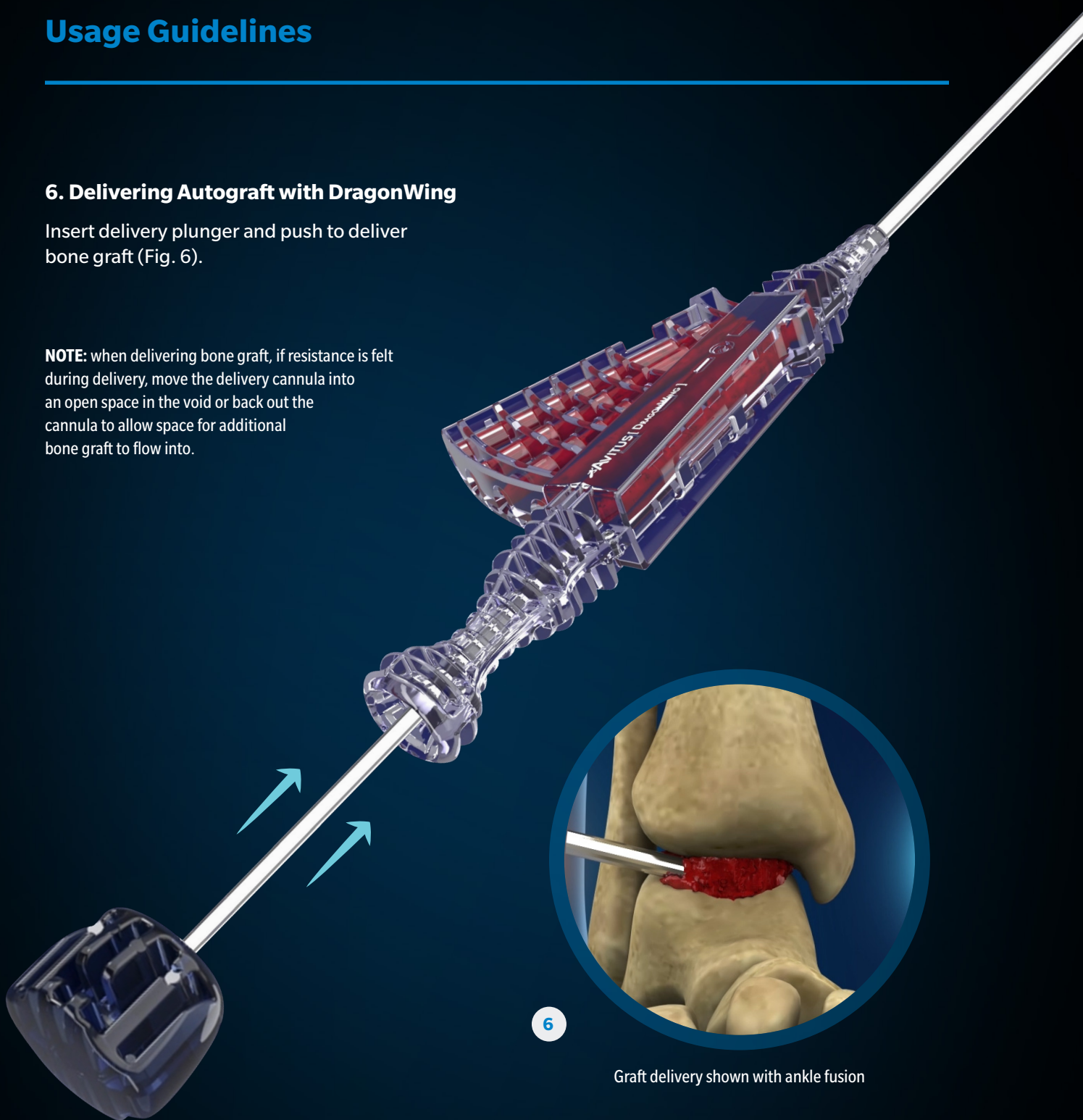


Usage Guidelines

6. Delivering Autograft with DragonWing

Insert delivery plunger and push to deliver bone graft (Fig. 6).

NOTE: when delivering bone graft, if resistance is felt during delivery, move the delivery cannula into an open space in the void or back out the cannula to allow space for additional bone graft to flow into.



Graft delivery shown with ankle fusion

Usage Guidelines



7. Advancing the cartridge

Remove the plunger (7a) and advance the cartridge until next delivery channel clicks into place (7b). Plunge and repeat for each channel (7c).

8. Repeat steps 2-7 with the replacement cartridge and reload delivery channel until desired volume is delivered.



Harvest. Debride.
Deliver.

Avitus®

DragonWing™ | Bone Harvester | Bone Debrider | ArchiMIS™



 **ZIMMER BIOMET**
Moving You Forward.™

This material is intended for health care professionals. Distribution to any other recipient is prohibited. For indications, contraindications, warnings, precautions, potential adverse effects and patient counselling information, see the instructions for use or contact your local representative; visit www.zimmerbiomet.com for additional product information.

Zimmer Biomet does not practice medicine. This technique was developed in conjunction with a health care professional. This document is intended for surgeons and is not intended for laypersons. Each surgeon should exercise his or her own independent judgment in the diagnosis and treatment of an individual patient, and this information does not purport to replace the comprehensive training surgeons have received. As with all surgical procedures, the product/technique used in each case will depend on the surgeon's medical judgment as the best treatment for each patient. Results will vary based on health, weight, activity, and other variables. Not all patients are candidates for this product and/or procedure. Caution: Federal (USA) law restricts this device to sale by or on the order of a surgeon. Rx only.

All content herein is protected by copyright, trademarks, and other intellectual property rights, as applicable, owned by or licensed to Zimmer Biomet or its affiliates unless otherwise indicated, and must not be redistributed, duplicated, or disclosed, in whole or in part, without the express written consent of Zimmer Biomet.

©2025 Zimmer Biomet. All rights reserved.



ST-0808-04-EN-Issue Date YYYY-MM-DD
VV-11000 • CC227-2023-12



Legal Manufacturer

Biomet Orthopedics
56 East Bell Drive
PO Box 587
Warsaw, IN 46581
www.zimmerbiomet.com