

Bespoke Implant Report for:

Zimmer Biomet

All Trabecular Metal Cups vs. All non-TM cementless cups

Comprising REVISION hips implanted up to:
NJR Database extract:

01 August 2015
30 September 2015

Produced on:

05 November 2015

Contents

All Trabecular Metal Cups:

Implant Usage	2
Patient and Procedure Details	3
Reasons for Revision	5
KM and Cox analysis - Endpoint Infection	6
KM and Cox analysis - Endpoint All Reasons for Revision	8

All TM Cups - Implanted for Infection:

Implant Usage	10
Patient and Procedure Details	11
Reasons for Revision	13
KM and Cox analysis - Endpoint Infection	14
KM and Cox analysis - Endpoint All Reasons for Revision	16

PROMs (All Trabecular metal Cups) 18

APPENDIX A – Component List 22

This report has been produced by the National Joint Registry of England, Wales and Northern Ireland (NJR). It summarises usage and outcomes associated with the use of the All Trabecular Metal Cups vs. All non-TM cementless cups in revision procedures, based on data collected by the NJR

This report is subject to the National Joint Registry Supplier Feedback Terms and Conditions Use. In particular, this analysis must not be released to any third party, unless directly employed by the Supplier, without written permission of the the Healthcare Quality Improvement Partnership, with the exception of submissions to regulatory bodies.

NJR Recorded Usage

Implant Usage

Totals Recorded in NJR	All Trabecular Metal Cups	All non-TM cementless cups
First usage in the NJR:	16-Apr-2003	02-Apr-2003
Last usage in this dataset:	31-Jul-2015	31-Jul-2015
Maximum implantation time (years):	11.9	12.3
Mean implantation time (years):	3.4	4.4
Procedures	9573	30452
Patients	9272	29303
Centres	281	410
Consultants	523	1183
Implanting Surgeons	615	1501

Variant	Year of implantation													Total
	2003	2004	2005	2006	2007	2008	2009	2010	2011	2012	2013	2014	2015	
All Trabecular Metal Cups	4	25	85	194	420	660	872	1129	1404	1616	1326	1200	638	9573
All non-TM cementless cups	532	1046	1714	2101	2665	2801	2846	2927	3219	3513	3102	2722	1264	30452

Patient / Procedure Details

Patient Details

	All Trabecular Metal Cups	All non-TM cementless cups
Total Procedures	9,573	30,452
Total Patients	9,272	29,303
Demographics		
Mean age	70.6	69.6
< 50	5.1%	6.7%
50 – 59	10.7%	12.3%
60 – 69	25.5%	25.6%
70 – 79	36.3%	34.3%
≥ 80	22.5%	21.0%
Median BMI	28	28
% BMI information available	55.8%	45.8%
Underweight (BMI < 18.5)	0.9%	1.0%
Normal (18.5 ≤ BMI < 25)	21.5%	21.6%
Overweight (25 ≤ BMI < 30)	40.1%	39.5%
Obese I (30 ≤ BMI < 35)	25.2%	25.1%
Obese II (35 ≤ BMI < 40)	8.9%	9.3%
Obese III (BMI ≥ 40)	3.5%	3.5%
% Male	41.8%	43.0%
ASA Grades		
P1 - Fit and healthy	9.7%	12.8%
P2 - Mild disease not incapacitating	63.3%	63.7%
P3 - Incapacitating systemic disease	25.8%	22.4%
P4 / P5	1.2%	1.2%
Indications		
Aseptic Loosening	57.1%	52.1%
Dislocation	9.5%	12.3%
Infection	6.6%	6.9%
Pain	24.1%	25.5%
Adverse Soft Tissue Reaction	13.5%	9.3%
Periprosthetic Fracture Stem	5.0%	4.6%
Other	10.8%	11.9%

Total of indications may exceed total number of implants, since more than one indication can be listed per case.

Patient / Procedure Details

Procedure Details

CupBrand	No Cement		Antibiotic Cement*		Non-Antibiotic Cement*	
	Count	%	Count	%	Count	%
Continuum	1026	66%	469	30%	67	4%
TM Modular Shell	4602	71%	1710	27%	138	2%
TM Natural Cup	245	92%	20	8%	0	0%
TM Revision Shell	333	26%	869	67%	94	7%
All Trabecular Metal Cups	6206	65%	3068	32%	299	3%
All other cementless cups	22679	74%	6761	22%	1012	3%

* Cement used with femoral and/or acetabular component

CupBrand	Bone Graft Used		
	No	Yes	% Yes
Continuum	1084	478	31%
TM Modular Shell	4436	2014	31%
TM Natural Cup	249	16	6%
TM Revision Shell	688	608	47%
All Trabecular Metal Cups	6457	3116	33%
All other cementless cups	23780	6672	22%

CupBrand	Single Stage Revision	Two Stage Revision	% Two-Stage
TM Modular Shell	5970	480	7.4%
TM Natural Cup	245	20	7.5%
TM Revision Shell	1193	103	7.9%
All Trabecular Metal Cups	8876	697	7.3%
All other cementless cups	28083	2369	7.8%

Cup Brand	Time since Primary (years)				
	Records	Mean	Median	Interquartile range	
Continuum	753	5.74	5.30	2.90	7.29
TM Modular Shell	2188	6.51	5.33	2.67	8.54
TM Natural Cup	47	4.16	2.87	0.87	6.92
TM Revision Shell	287	6.76	5.16	1.92	9.54
All other cementless cups	11813	5.72	4.47	1.76	7.93

Revision and Survivorship

Reasons for Revision

Reasons for revision of primary procedures in which the implant was used.

Reason for Revision †	Revisions per 100 component years		
	All Trabecular Metal Cups	All non-TM cementless cups	p.value for difference
Pain	0.30	0.35	0.184
Dislocation / Subluxation	0.56	0.40	<0.001
Adverse Soft Tissue Reaction	0.11	0.12	0.652
Infection	0.29	0.34	0.235
Aseptic Loosening - Stem	0.24	0.32	0.019
Aseptic Loosening - Socket	0.32	0.42	0.016
Periprosthetic Fracture Stem	0.19	0.14	0.052
Periprosthetic Fracture Socket	0.03	0.05	0.299
Malalignment Stem	0.02	0.04	0.097
Malalignment Socket	0.04	0.07	0.046
Wear Of Acetabular Component	0.08	0.08	0.912
Lysis Stem	0.06	0.08	0.211
Lysis Socket	0.06	0.09	0.237
Implant Fracture Stem	0.06	0.04	0.102
Implant Fracture Socket	0.01	0.02	0.289
Dissociation Of Liner	0.03	0.03	0.865
Other	0.05	0.12	<0.001

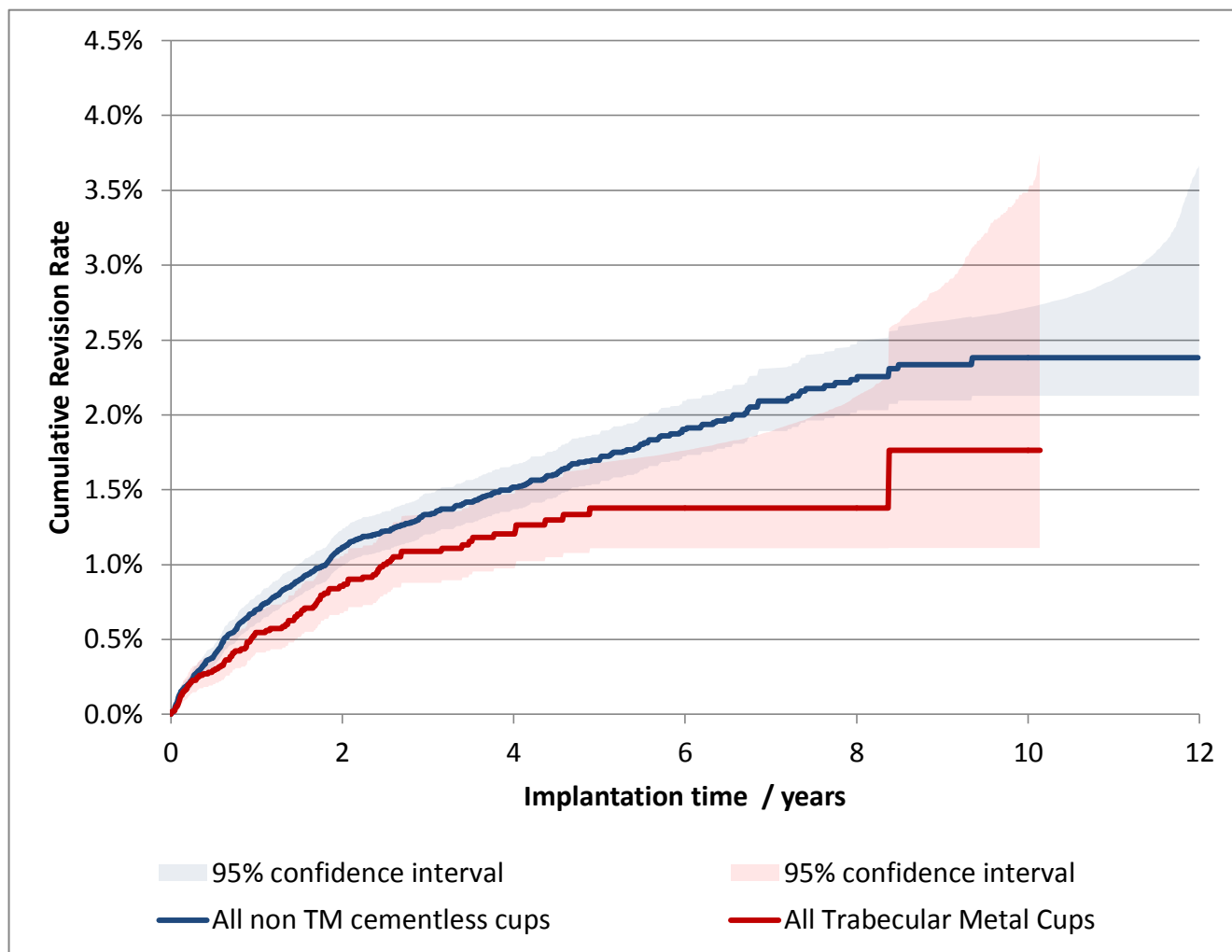
† multiple reasons may be listed for one revision procedure

N.B. revision rate has not been adjusted for patient variables

Components Revised	All Trabecular Metal Cups	All non-TM cementless cups
Femoral only	24.8%	21.0%
Cup only	25.5%	29.0%
Both Femoral and Cup	31.3%	37.5%
Neither femoral nor acetabular revision recorded *	18.4%	12.5%

* includes isolated head and/or liner exchange

Endpoint: Infection



Stratified Log-rank test, with observed and expected number of revisions

Adjustment	All Trabecular Metal Cups		All non TM cementless cups		p-value
	Observed	Expected	Observed	Expected	
Unadjusted	95	118.1	455	431.9	0.016
Adjusted	95	114.9	455	435.1	0.036

Cox Proportional Hazards model for revision risk ratio of All Trabecular Metal Cups / All non TM cementless cups

Adjustment	Hazard Ratio (95% CI)	p-value
Unadjusted	0.76 (0.61 - 0.95)	0.016
Adjusted	0.79 (0.63 - 0.99)	0.036

Adjustment includes Patient Gender, Age Group, and indications (OA/non-OA)

Revision and Survivorship

Cumulative Revision Rate

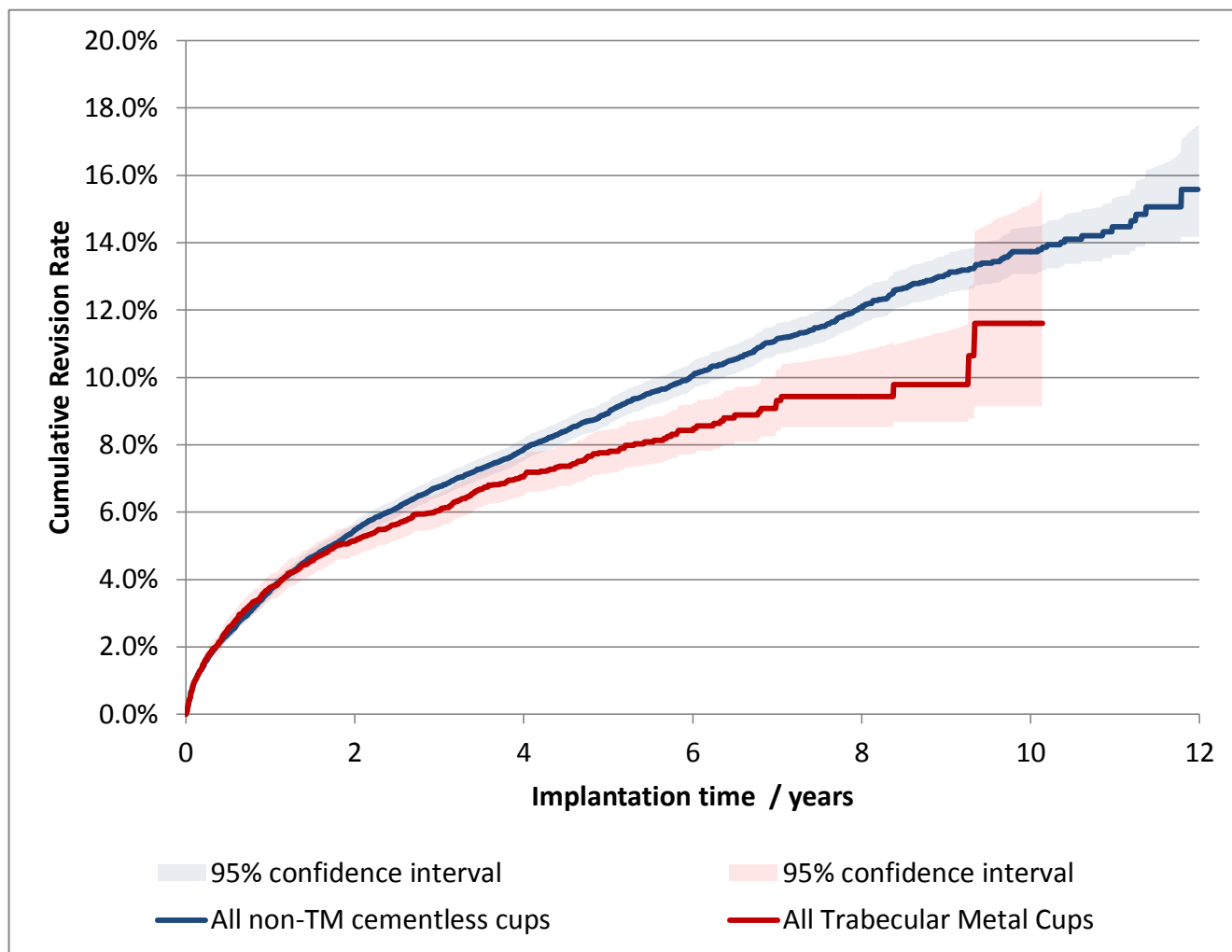
Endpoint: Infection

Period /years	All Trabecular Metal Cups		All non TM cementless cups	
	At Risk	Revision Rate	At Risk	Revision Rate
0	9,573	-	30,452	-
1	7,905	0.55% (0.41% - 0.70%)	26,387	0.70% (0.61% - 0.80%)
2	6,523	0.86% (0.68% - 1.06%)	22,722	1.12% (1.00% - 1.24%)
3	4,996	1.09% (0.88% - 1.34%)	18,803	1.34% (1.20% - 1.48%)
4	3,420	1.21% (0.98% - 1.47%)	15,061	1.52% (1.37% - 1.67%)
5	2,244	1.38% (1.11% - 1.68%)	11,916	1.70% (1.54% - 1.87%)
6	1,385	1.38% (1.11% - 1.76%)	9,157	1.90% (1.72% - 2.09%)
7	782	1.38% (1.11% - 1.89%)	6,653	2.09% (1.89% - 2.31%)
8	367	1.38% (1.11% - 2.13%)	4,504	2.24% (2.01% - 2.47%)
9	138	1.76% (1.11% - 2.86%)	2,679	2.34% (2.10% - 2.63%)
10	55	1.76% (1.11% - 3.49%)	1,394	2.38% (2.13% - 2.72%)

Cumulative revision rate with 95% confidence intervals

Rate is only reported for times where more than 40 remain at risk

Endpoint: Revision for any reason



Stratified Log-rank test, with observed and expected number of revisions

Adjustment	All Trabecular Metal Cups		All non-TM cementless cups		p-value
	Observed	Expected	Observed	Expected	
Unadjusted	597	660.0	2535	2472.0	0.006
Adjusted	597	651.6	2535	2480.4	0.015

Cox Proportional Hazards model for revision risk ratio of All Trabecular Metal Cups / All non-TM cementless cups

Adjustment	Hazard Ratio (95% CI)	p-value
Unadjusted	0.88 (0.81 - 0.96)	0.006
Adjusted	0.89 (0.82 - 0.98)	0.015

Adjustment includes Patient Gender, Age Group, and indications (OA/non-OA)

Revision and Survivorship

Cumulative Revision Rate

Endpoint: Revision for any reason

Period /years	All Trabecular Metal Cups		All non-TM cementless cups	
	At Risk	Revision Rate	At Risk	Revision Rate
0	9,573	-	30,452	-
1	7,905	3.77% (3.40% - 4.16%)	26,387	3.70% (3.49% - 3.91%)
2	6,523	5.15% (4.70% - 5.62%)	22,722	5.47% (5.21% - 5.74%)
3	4,996	6.05% (5.55% - 6.57%)	18,803	6.76% (6.46% - 7.06%)
4	3,420	7.05% (6.48% - 7.64%)	15,061	7.86% (7.53% - 8.20%)
5	2,244	7.77% (7.14% - 8.44%)	11,916	8.94% (8.57% - 9.31%)
6	1,385	8.43% (7.71% - 9.20%)	9,157	10.06% (9.65% - 10.47%)
7	782	9.32% (8.43% - 10.24%)	6,653	11.15% (10.69% - 11.61%)
8	367	9.44% (8.53% - 10.78%)	4,504	12.07% (11.56% - 12.59%)
9	138	9.79% (8.68% - 11.38%)	2,679	13.06% (12.47% - 13.65%)
10	55	11.61% (9.15% - 15.09%)	1,394	13.73% (13.07% - 14.47%)

Cumulative revision rate with 95% confidence intervals

Rate is only reported for times where more than 40 remain at risk

NJR Recorded Usage

Implant Usage

Totals Recorded in NJR	All TM cups - Infection	All non-TM - Infection
First usage in the NJR:	26-Apr-2004	20-Apr-2003
Last usage in this dataset:	30-Jul-2015	30-Jul-2015
Maximum implantation time (years):	11.3	12.3
Mean implantation time (years):	3.3	4.6
Procedures	628	2114
Patients	623	2091
Centres	119	260
Consultants	191	477
Implanting Surgeons	203	555

Variant	Year of implantation													Total
	2003	2004	2005	2006	2007	2008	2009	2010	2011	2012	2013	2014	2015	
All TM cups - Infection	0	1	6	14	25	53	46	90	82	95	89	76	51	628
All non-TM - Infection	53	70	135	174	187	210	235	205	209	213	176	162	85	2114

Patient / Procedure Details

Patient Details

	All TM cups - Infection	All non-TM - Infection
Total Procedures	628	2,114
Total Patients	623	2,091
Demographics		
Mean age	68.3	68.1
< 50	7.5%	8.1%
50 – 59	10.0%	12.7%
60 – 69	32.5%	29.9%
70 – 79	34.9%	32.8%
≥ 80	15.1%	16.5%
Median BMI	28	28
% BMI information available	49.4%	38.1%
Underweight (BMI < 18.5)	0.3%	1.0%
Normal (18.5 ≤ BMI < 25)	20.3%	22.7%
Overweight (25 ≤ BMI < 30)	36.5%	34.4%
Obese I (30 ≤ BMI < 35)	25.8%	26.3%
Obese II (35 ≤ BMI < 40)	11.9%	9.4%
Obese III (BMI ≥ 40)	5.2%	6.1%
% Male	51.3%	55.8%
ASA Grades		
P1 - Fit and healthy	6.7%	9.7%
P2 - Mild disease not incapacitating	57.5%	60.2%
P3 - Incapacitating systemic disease	34.2%	28.7%
P4 / P5	1.6%	1.4%
Indications		
Aseptic Loosening	8.1%	8.1%
Dislocation	1.3%	2.2%
Infection	100.0%	100.0%
Pain	8.9%	9.0%
Adverse Soft Tissue Reaction	2.1%	0.8%
Periprosthetic Fracture Stem	1.6%	2.0%
Other	0.0%	0.0%

Total of indications may exceed total number of implants, since more than one indication can be listed per case.

Patient / Procedure Details

Procedure Details

CupBrand	No Cement		Antibiotic Cement*		Non-Antibiotic Cement*	
	Count	%	Count	%	Count	%
Continuum	51	55%	35	38%	6	7%
TM Modular Shell	280	65%	146	34%	6	1%
TM Natural Cup	14	82%	3	18%	0	0%
TM Revision Shell	18	21%	63	72%	6	7%
All Trabecular Metal Cups	363	58%	247	39%	18	3%
All other cementless cups	1412	67%	618	29%	84	4%

* Cement used with femoral and/or acetabular component

Cup Brand	Bone Graft Used		
	No	Yes	% Yes
Continuum	77	15	16%
TM Modular Shell	341	91	21%
TM Natural Cup	16	1	6%
TM Revision Shell	61	26	30%
All Trabecular Metal Cups	495	133	21%
All other cementless cups	1831	283	13%

Cup Brand	Single Stage Revision	Two Stage Revision	% Two-Stage
Continuum	19	73	79.3%
TM Modular Shell	83	349	80.8%
TM Natural Cup	2	15	88.2%
TM Revision Shell	18	69	79.3%
All Trabecular Metal Cups	122	506	80.6%
All other cementless cups	456	1658	78.4%

Cup Brand	Time since Primary (years)				
	Records	Mean	Median	Interquartile range	
Continuum	57	3.14	2.20	1.11	4.38
TM Modular Shell	212	3.72	3.04	1.36	5.68
TM Natural Cup	6	3.45	1.12	0.61	6.54
TM Revision Shell	39	3.80	3.59	1.69	4.77
All other cementless cups	1122	3.01	1.92	0.82	3.93

Revision and Survivorship

Reasons for Revision

Reasons for revision of primary procedures in which the implant was used.

Reason for Revision †	Revisions per 100 component years		
	All TM cups - Infection	All non-TM - Infection	p.value for difference
Pain	0.43	0.32	0.412
Dislocation / Subluxation	0.91	0.41	0.009
Adverse Soft Tissue Reaction	0.00	0.07	0.616
Infection	0.76	0.99	0.388
Aseptic Loosening - Stem	0.29	0.31	1
Aseptic Loosening - Socket	0.24	0.22	0.799
Periprosthetic Fracture Stem	0.24	0.13	0.349
Periprosthetic Fracture Socket	0.00	0.00	1
Malalignment Stem	0.00	0.02	1
Malalignment Socket	0.05	0.02	0.445
Wear Of Acetabular Component	0.05	0.07	1
Lysis Stem	0.05	0.14	0.496
Lysis Socket	0.05	0.04	1
Implant Fracture Stem	0.10	0.00	0.032
Implant Fracture Socket	0.00	0.02	1
Dissociation Of Liner	0.05	0.05	1
Other	0.05	0.20	0.236

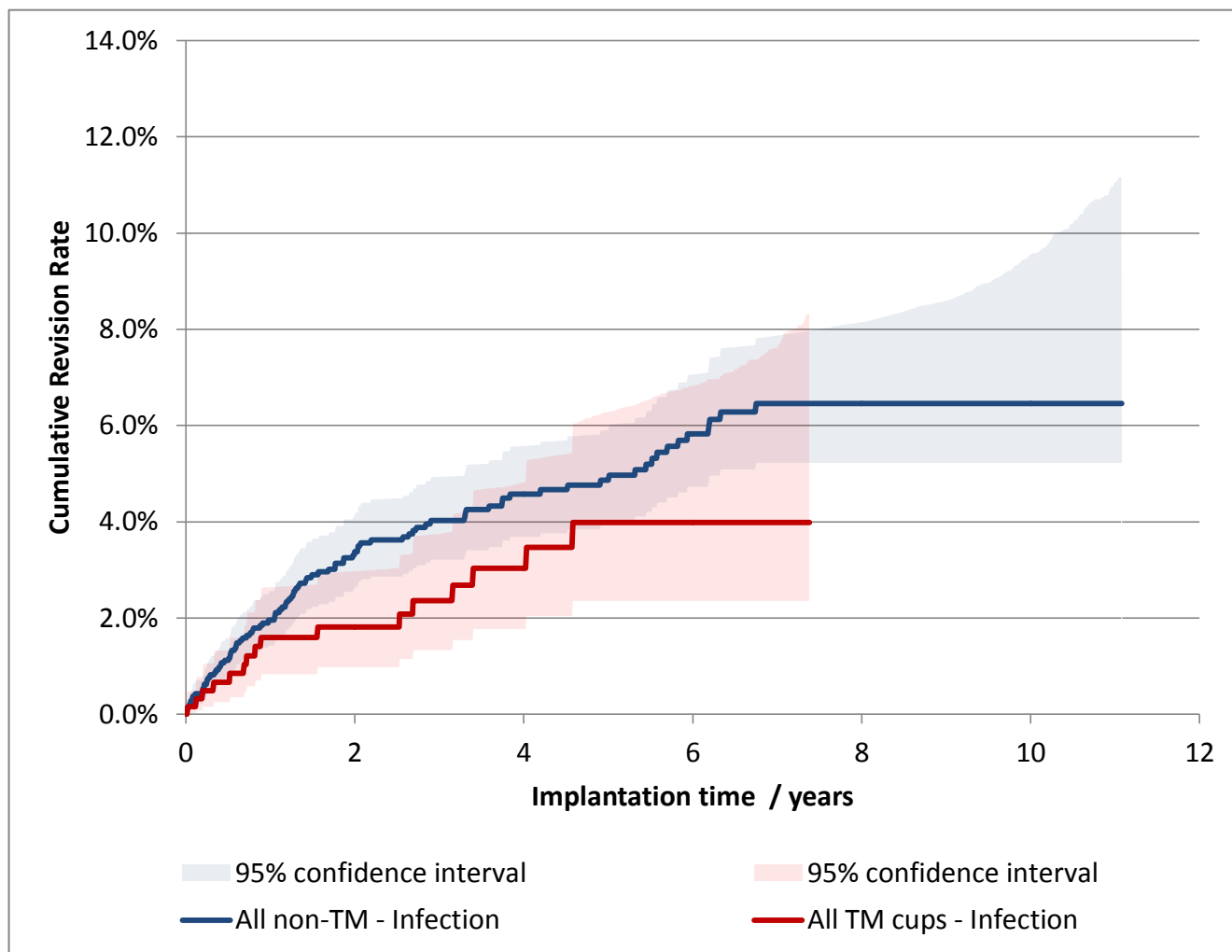
† multiple reasons may be listed for one revision procedure

N.B. revision rate has not been adjusted for patient variables

Components Revised	All TM cups - Infection	All non-TM - Infection
Femoral only	18.5%	14.4%
Cup only	22.2%	17.1%
Both Femoral and Cup	29.6%	48.1%
Neither femoral nor acetabular revision recorded *	29.6%	20.4%

* includes isolated head and/or liner exchange

Endpoint: Infection



Stratified Log-rank test, with observed and expected number of revisions

Adjustment	All TM cups - Infection		All non-TM - Infection		p-value
	Observed	Expected	Observed	Expected	
Unadjusted	16	22.5	96	89.5	0.122
Adjusted	16	22.8	96	89.2	0.106

Cox Proportional Hazards model for revision risk ratio of All TM cups - Infection / All non-TM - Infection

Adjustment	Hazard Ratio (95% CI)	p-value
Unadjusted	0.66 (0.39 - 1.12)	0.124
Adjusted	0.65 (0.38 - 1.10)	0.108

Adjustment includes Patient Gender, Age Group, and indications (OA/non-OA)

Revision and Survivorship

Cumulative Revision Rate

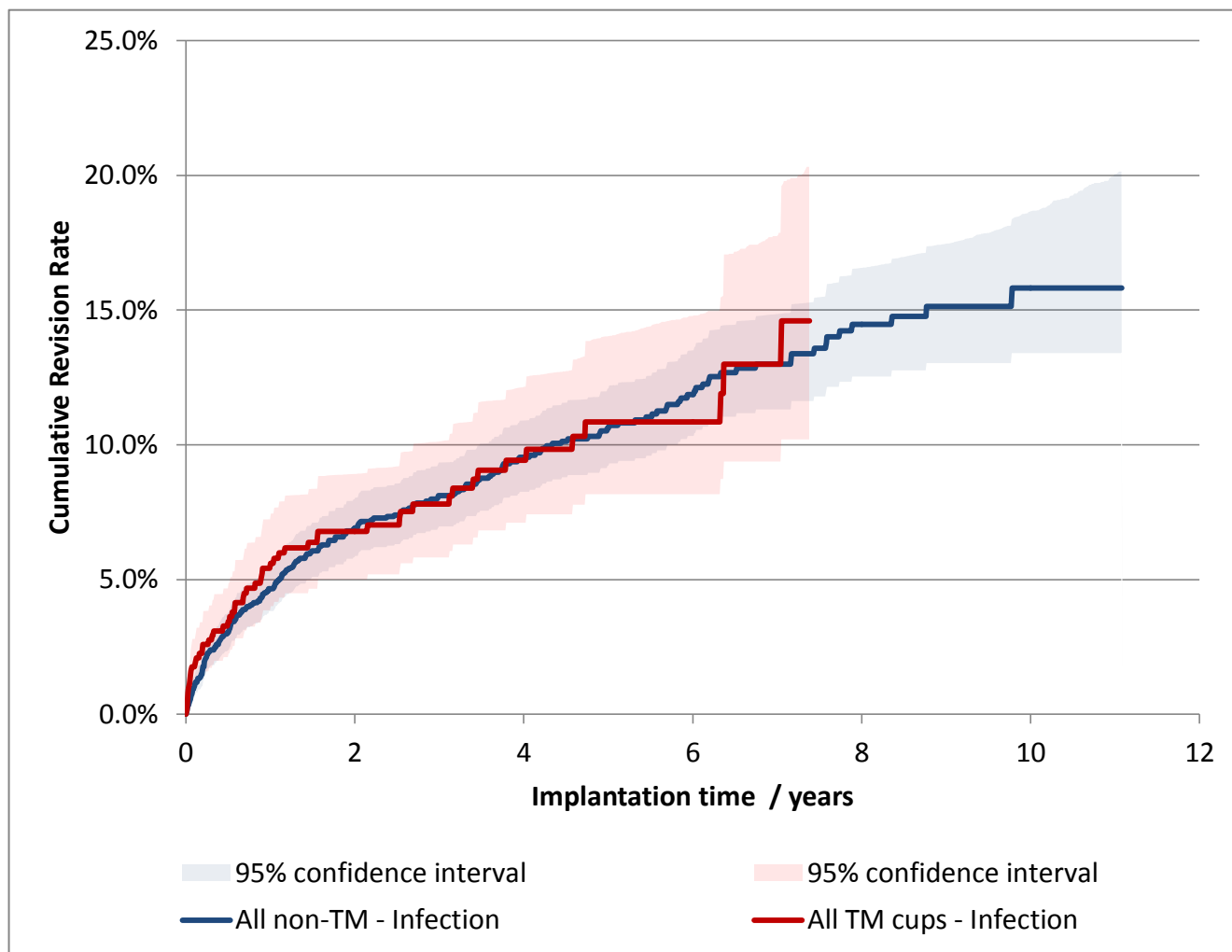
Endpoint: Infection

Period /years	All TM cups - Infection		All non-TM - Infection	
	At Risk	Revision Rate	At Risk	Revision Rate
0	628	-	2,114	-
1	501	1.60% (0.83% - 2.64%)	1,822	1.95% (1.43% - 2.56%)
2	416	1.81% (0.98% - 2.97%)	1,594	3.38% (2.65% - 4.19%)
3	319	2.36% (1.33% - 3.75%)	1,340	4.03% (3.22% - 4.94%)
4	226	3.03% (1.77% - 4.82%)	1,118	4.58% (3.69% - 5.58%)
5	148	3.98% (2.36% - 6.29%)	898	4.87% (3.93% - 5.91%)
6	96	3.98% (2.36% - 6.83%)	677	5.83% (4.73% - 7.06%)
7	58	3.98% (2.36% - 7.62%)	493	6.46% (5.23% - 7.87%)
8		(-)	343	6.46% (5.23% - 8.15%)
9		(-)	212	6.46% (5.23% - 8.60%)
10		(-)	100	6.46% (5.23% - 9.55%)

Cumulative revision rate with 95% confidence intervals

Rate is only reported for times where more than 40 remain at risk

Endpoint: Revision for any reason



Stratified Log-rank test, with observed and expected number of revisions

Adjustment	All TM cups - Infection		All non-TM - Infection		p-value
	Observed	Expected	Observed	Expected	
Unadjusted	54	53.3	216	216.7	0.917
Adjusted	54	54.6	216	215.4	0.932

Cox Proportional Hazards model for revision risk ratio of All TM cups - Infection / All non-TM - Infection

Adjustment	Hazard Ratio (95% CI)	p-value
Unadjusted	1.02 (0.75 - 1.37)	0.917
Adjusted	0.99 (0.73 - 1.34)	0.933

Adjustment includes Patient Gender, Age Group, and indications (OA/non-OA)

Revision and Survivorship

Cumulative Revision Rate

Endpoint: Revision for any reason

Period /years	All TM cups - Infection		All non-TM - Infection	
	At Risk	Revision Rate	At Risk	Revision Rate
0	628	-	2,114	-
1	501	5.61% (4.02% - 7.45%)	1,822	4.67% (3.83% - 5.58%)
2	416	6.80% (5.00% - 8.92%)	1,594	6.92% (5.88% - 8.04%)
3	319	7.80% (5.82% - 10.13%)	1,340	8.12% (6.97% - 9.35%)
4	226	9.43% (7.11% - 12.16%)	1,118	9.54% (8.26% - 10.91%)
5	148	10.85% (8.17% - 14.04%)	898	10.62% (9.23% - 12.09%)
6	96	10.85% (8.17% - 14.78%)	677	11.87% (10.33% - 13.51%)
7	58	12.99% (9.38% - 17.75%)	493	13.00% (11.31% - 14.85%)
8		(-)	343	14.48% (12.53% - 16.57%)
9		(-)	212	15.14% (13.03% - 17.47%)
10		(-)	100	15.81% (13.40% - 18.66%)

Cumulative revision rate with 95% confidence intervals

Rate is only reported for times where more than 40 remain at risk

Bespoke Implant Report on:

All Trabecular Metal Cups

Patient Reported Outcomes

PROMs Analysis

Comprising PROMs data up to and including: 30th December 2014

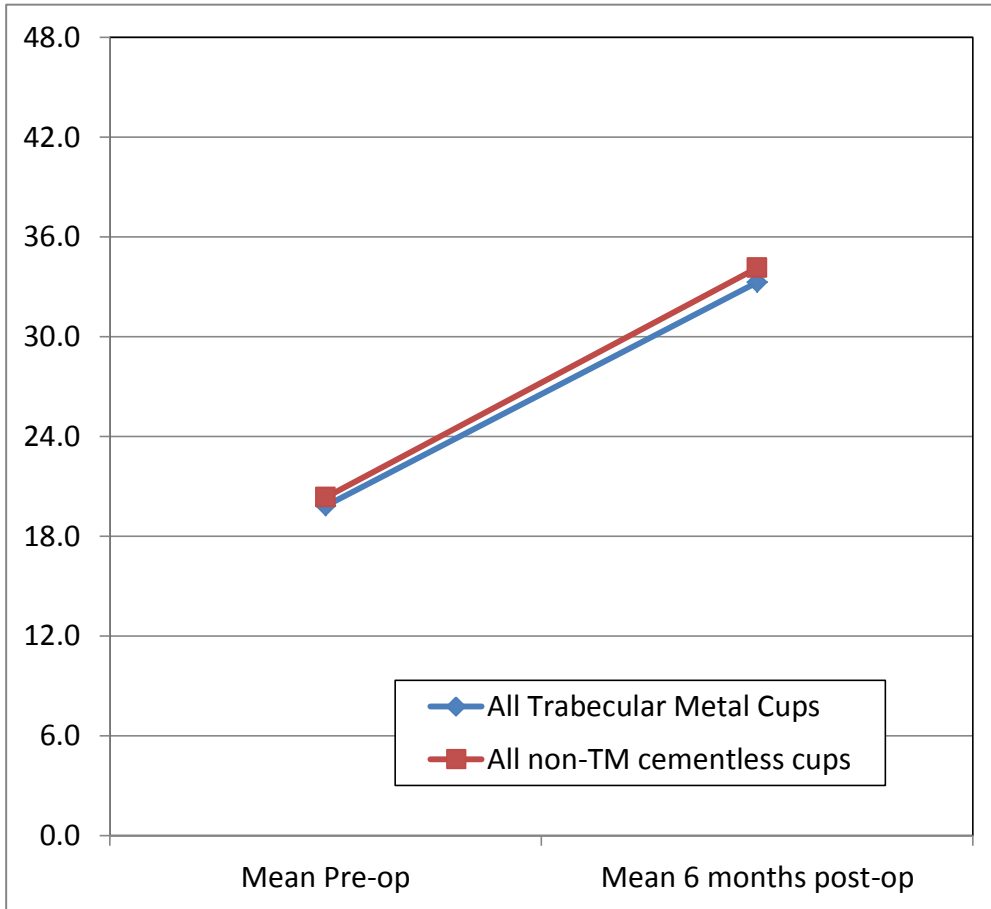
Measure	Product Group	Pre-Op Records	Mean Pre-Op Score	6-month records	Mean 6 month Score	Health Gain	p value for difference in gain	Improved	Unchanged / Worsened	p-value for difference in improved
Oxford Hip Score	All Trabecular Metal Cups	1931	19.8	1488	33.3	13.5	0.384	85%	15%	0.532
	All non-TM cementless cups	4,549	20.3	3,577	34.1	13.8		86%	14%	
EQ-5D Index	All Trabecular Metal Cups	1851	0.37	1421	0.66	0.29	0.610	72%	28%	0.800
	All non-TM cementless cups	4,335	0.38	3,384	0.68	0.29		72%	28%	
EQ-VAS	All Trabecular Metal Cups	1739	63.3	1415	70.2	6.9	0.394	52%	48%	0.689
	All non-TM cementless cups	4,110	64.1	3,378	70.7	6.6		53%	47%	

N.B. PROMs scores have not been case mix adjusted

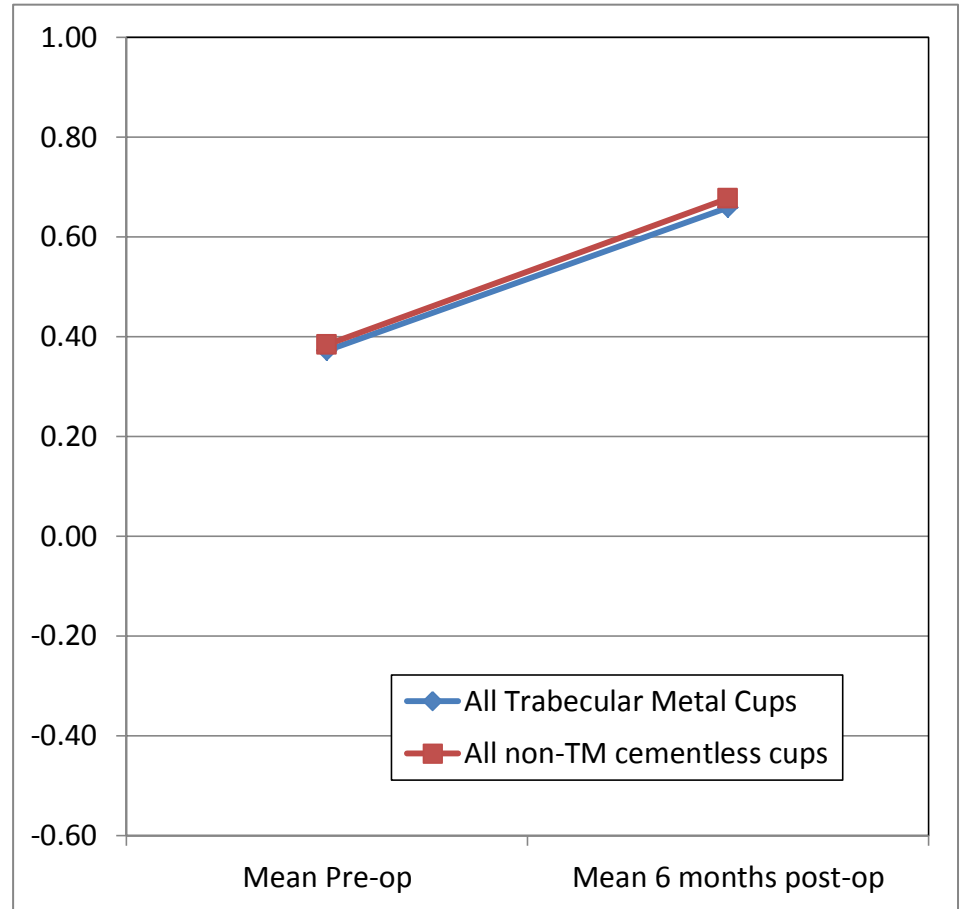
Patient Reported Outcomes

PROMs Analysis

Comprising PROMs data up to and including: 30th December 2014



Oxford Hip score



EQ5D-Score

Bespoke Implant Report on:

All Trabecular Metal Cups

Responses are not case mix adjusted

Patient Reported Outcomes



Disclaimer

Disclaimer

The National Joint Registry (NJR) produces this report (through its contractor, Northgate Information Solutions UK Limited) using data collected, collated and provided by third parties. As a result, neither NJR or Northgate takes any responsibility for the accuracy, currency, reliability and correctness of any data used or referred to in this report, and disclaims all warranties in relation to such data, in each case to the maximum extent permitted by legislation.

To the maximum extent permitted by law, neither the NJR or Northgate shall have any liability (including but not limited to liability by reason of negligence) for any loss, damage, cost or expense incurred or arising by reason of any person using or relying on the data within this report and whether caused by reason of any error, omission or misrepresentation in the report or otherwise. This report is not to be taken as advice. Third parties using or relying on the data in this report do so at their own risk and will be responsible for making their own assessment and should verify all relevant representations, statements and information with their own professional advisers.

Appendix A: Component List

Catalogue Number	Description	Number Implanted
00-7000-048-20	TM Acetabular Revision Shell sz 48	10
00-7000-050-20	TM Acetabular Revision Shell sz 50	39
00-7000-052-20	TM Acetabular Revision Shell sz 52	59
00-7000-054-20	TM Acetabular Revision Shell sz 54	140
00-7000-056-20	TM Acetabular Revision Shell sz 56	167
00-7000-058-20	TM Acetabular Revision Shell sz 58	216
00-7000-060-20	TM Acetabular Revision Shell sz 60	168
00-7000-062-20	TM Acetabular Revision Shell sz 62	153
00-7000-064-20	TM Acetabular Revision Shell sz 64	126
00-7000-066-20	TM Acetabular Revision Shell sz 66	87
00-7000-068-20	TM Acetabular Revision Shell sz 68	60
00-7000-070-20	TM Acetabular Revision Shell sz 70	46
00-7000-072-70	TM Acetabular Revision Shell no dovetail sz 72	12
00-7000-074-70	TM Acetabular Revision Shell no dovetail sz 74	9
00-7000-076-70	TM Acetabular Revision Shell no dovetail sz 76	2
00-7000-078-70	TM Acetabular Revision Shell no dovetail sz 78	1
00-7000-080-70	TM Acetabular Revision Shell no dovetail sz 80	1
00-7210-048-28	10 Degree TM Natural Cup screw-holed 48mm OD x 28mm ID	1
00-7210-054-28	10 Degree TM Natural Cup screw-holed 54mm OD x 28mm ID	3
00-7210-056-28	10 Degree TM Natural Cup screw-holed 56mm OD x 28mm ID	3
00-7210-058-28	10 Degree TM Natural Cup screw-holed 58mm OD x 28mm ID	2
00-7210-062-28	10 Degree TM Natural Cup screw-holed 62mm OD x 28mm ID	1
00-7210-064-28	10 Degree TM Natural Cup screw-holed 64mm OD x 28mm ID	2
00-7210-070-28	10 Degree TM Natural Cup screw-holed 70mm OD x 28mm ID	1
00-7260-046-22	10 Degree TM Natural Cup non-holed ID 22mm OD 46mm	1
00-7260-048-28	10 Degree TM Natural Cup non-holed ID 28mm OD 48mm	2
00-7260-050-28	10 Degree TM Natural Cup non-holed ID 28mm OD 50mm	14
00-7260-052-28	10 Degree TM Natural Cup non-holed ID 28mm OD 52mm	12
00-7260-052-32	10 Degree TM Natural Cup non-holed ID 32mm OD 52mm	4
00-7260-054-28	10 Degree TM Natural Cup non-holed ID 28mm OD 54mm	16
00-7260-054-32	10 Degree TM Natural Cup non-holed ID 32mm OD 54mm	5
00-7260-056-28	10 Degree TM Natural Cup non-holed ID 28mm OD 56mm	16
00-7260-056-32	10 Degree TM Natural Cup non-holed ID 32mm OD 56mm	7
00-7260-058-28	10 Degree TM Natural Cup non-holed ID 28mm OD 58mm	26
00-7260-058-32	10 Degree TM Natural Cup non-holed ID 32mm OD 58mm	7
00-7260-060-28	10 Degree TM Natural Cup non-holed ID 28mm OD 60mm	16
00-7260-060-32	10 Degree TM Natural Cup non-holed ID 32mm OD 60mm	6
00-7260-062-28	10 Degree TM Natural Cup non-holed ID 28mm OD 62mm	12
00-7260-062-32	10 Degree TM Natural Cup non-holed ID 32mm OD 62mm	6
00-7260-064-28	10 Degree TM Natural Cup non-holed ID 28mm OD 64mm	15
00-7260-064-32	10 Degree TM Natural Cup non-holed ID 32mm OD 64mm	3
00-7260-066-28	10 Degree TM Natural Cup non-holed ID 28mm OD 66mm	2
00-7260-066-32	10 Degree TM Natural Cup non-holed ID 32mm OD 66mm	2
00-7260-068-28	10 Degree TM Natural Cup non-holed ID 28mm OD 68mm	7
00-7260-068-32	10 Degree TM Natural Cup non-holed ID 32mm OD 68mm	2
00-7260-070-28	10 Degree TM Natural Cup non-holed ID 28mm OD 70mm	2

Appendix A: Component List

Catalogue Number	Description	Number Implanted
00-7260-070-32	10 Degree TM Natural Cup non-holed ID 32mm OD 70mm	1
00-8757-044-00	CONTINUUM SHELL UNI 44 CC	1
00-8757-044-01	CONTINUUM SHELL CLUSTER 44 EE	2
00-8757-046-02	Continuum Shell Multi 46 FF	2
00-8757-048-01	CONTINUUM SHELL CLUSTER 48 GG	16
00-8757-048-02	Continuum Shell Multi 48 GG	9
00-8757-050-00	CONTINUUM SHELL UNI 50 HH	2
00-8757-050-01	CONTINUUM SHELL CLUSTER 50 HH	41
00-8757-050-02	Continuum Shell Multi 50 HH	27
00-8757-052-00	CONTINUUM SHELL UNI 52 II	2
00-8757-052-01	CONTINUUM SHELL CLUSTER 52 II	135
00-8757-052-02	Continuum Shell Multi 52 II	63
00-8757-054-00	CONTINUUM SHELL UNI 54 JJ	3
00-8757-054-01	CONTINUUM SHELL CLUSTER 54 JJ	167
00-8757-054-02	Continuum Shell Multi 54 JJ	73
00-8757-056-00	CONTINUUM SHELL UNI 56 KK	3
00-8757-056-01	CONTINUUM SHELL CLUSTER 56 KK	155
00-8757-056-02	Continuum Shell Multi 56 KK	97
00-8757-058-00	CONTINUUM SHELL UNI 58 LL	4
00-8757-058-01	CONTINUUM SHELL CLUSTER 58 LL	155
00-8757-058-02	Continuum Shell Multi 58 LL	113
00-8757-060-00	CONTINUUM SHELL UNI 60 MM	4
00-8757-060-01	CONTINUUM SHELL CLUSTER 60 MM	102
00-8757-060-02	Continuum Shell Multi 60 MM	77
00-8757-062-00	CONTINUUM SHELL UNI 62 NN	1
00-8757-062-01	CONTINUUM SHELL CLUSTER 62 NN	74
00-8757-062-02	Continuum Shell Multi 62 NN	62
00-8757-064-00	CONTINUUM SHELL UNI 64 OO	1
00-8757-064-01	CONTINUUM SHELL CLUSTER 64 OO	48
00-8757-064-02	Continuum Shell Multi 64 OO	37
00-8757-066-01	CONTINUUM SHELL CLUSTER 66 PP	22
00-8757-066-02	Continuum Shell Multi 66 PP	23
00-8757-068-01	CONTINUUM SHELL CLUSTER 68 QU	12
00-8757-068-02	Continuum Shell Multi 68 QU	21
00-8757-070-02	Continuum Shell Multi 70 RR	2
00-8757-072-02	Continuum Shell Multi 72 SS	4
00-8757-076-02	Continuum Shell Multi 76 UU	1
00-8757-078-02	Continuum Shell Multi 78 VV	1
6202-44-20	58mm Trabecular metal modular cup multi holed 44mm	1
6202-48-20	58mm Trabecular metal modular cup multi holed 48mm	39
6202-48-22	58mm Trabecular metal modular cup cluster holed 48mm	33
6202-50-20	58mm Trabecular metal modular cup multi holed 50mm	206
6202-50-22	58mm Trabecular metal modular cup cluster holed 50mm	147
6202-52-20	58mm Trabecular metal modular cup multi holed 52mm	373
6202-52-21	Trabecular metal cup 52mm solid	1
6202-52-22	58mm Trabecular metal modular cup cluster holed 52mm	246

Appendix A: Component List

Catalogue Number	Description	Number Implanted
6202-54-20	58mm Trabecular metal modular cup multi holed 54mm	577
6202-54-22	58mm Trabecular metal modular cup cluster holed 54mm	325
6202-56-20	58mm Trabecular metal modular cup multi holed 56mm	610
6202-56-22	58mm Trabecular metal modular cup cluster holed 56mm	393
6202-58-20	58mm Trabecular metal modular cup multi holed 58mm	633
6202-58-21	Trabecular metal cup 58mm solid	1
6202-58-22	58mm Trabecular metal modular cup cluster holed 58mm	342
6202-60-20	58mm Trabecular metal modular cup multi holed 60mm	556
6202-60-21	Trabecular metal cup 60mm solid	1
6202-60-22	58mm Trabecular metal modular cup cluster holed 60mm	287
6202-62-20	58mm Trabecular metal modular cup multi holed 62mm	429
6202-62-22	58mm Trabecular metal modular cup cluster holed 62mm	199
6202-64-20	58mm Trabecular metal modular cup multi holed 64mm	309
6202-64-21	Trabecular metal cup 64mm solid	3
6202-64-22	58mm Trabecular metal modular cup cluster holed 64mm	112
6202-66-20	58mm Trabecular metal modular cup multi holed 66mm	201
6202-66-22	58mm Trabecular metal modular cup cluster holed 66mm	86
6202-68-20	58mm Trabecular metal modular cup multi holed 68mm	141
6202-68-22	58mm Trabecular metal modular cup cluster holed 68mm	53
6202-70-20	58mm Trabecular metal modular cup multi holed 70mm	107
6202-70-22	58mm Trabecular metal modular cup cluster holed 70mm	23
6202-72-20	58mm Trabecular metal modular cup multi holed 72mm	7
6202-72-22	58mm Trabecular metal modular cup cluster holed 72mm	2
6202-74-20	58mm Trabecular metal modular cup multi holed 74mm	7
7210-50-28	10 Degree TM Natural Cup screw-holed 50mm OD x 28mm ID	1
7210-54-28	10 Degree TM Natural Cup screw-holed 54mm OD x 28mm ID	7
7210-58-28	10 Degree TM Natural Cup screw-holed 58mm OD x 28mm ID	19
7210-60-28	10 Degree TM Natural Cup screw-holed 60mm OD x 28mm ID	10
7210-62-28	10 Degree TM Natural Cup screw-holed 62mm OD x 28mm ID	4
7210-64-28	10 Degree TM Natural Cup screw-holed 64mm OD x 28mm ID	5
7210-66-28	10 Degree TM Natural Cup screw-holed 66mm OD x 28mm ID	2
7210-68-28	10 Degree TM Natural Cup screw-holed 68mm OD x 28mm ID	6
7255-48-28	0 Degree TM Natural Cup ID 28mm OD 48mm	1
7255-54-28	0 Degree TM Natural Cup ID 28mm OD 54mm	2
7255-56-28	0 Degree TM Natural Cup ID 28mm OD 56mm	1
7255-58-28	0 Degree TM Natural Cup ID 28mm OD 58mm	1
7255-60-28	0 Degree TM Natural Cup ID 28mm OD 60mm	4
7255-62-28	0 Degree TM Natural Cup ID 28mm OD 62mm	2
7255-64-28	0 Degree TM Natural Cup ID 28mm OD 64mm	1
7255-66-28	0 Degree TM Natural Cup ID 28mm OD 66mm	1
7255-68-28	0 Degree TM Natural Cup ID 28mm OD 68mm	1