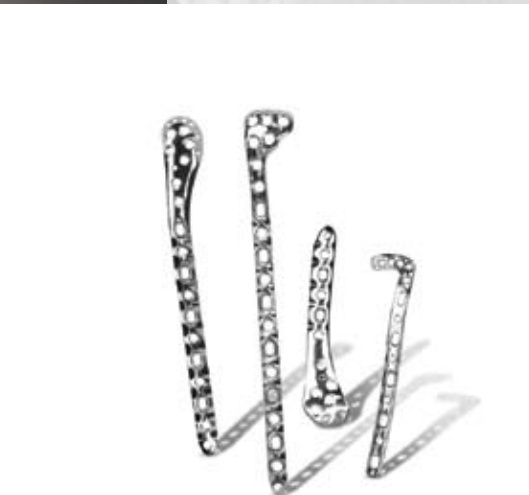




**Zimmer®
Periarticular
Locking Plate
System**



Locking in the perfect fit



zimmer | trauma
Confidence in your hands®

PULL
HERE



**Zimmer®
Periarticular
Locking Plate
System**



Locking in the perfect fit



zimmer | trauma
Confidence in your hands®

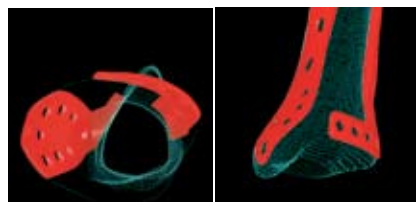
Periarticular Locking Plate System

Combining anatomic fit with locking technology

With the Periarticular Locking Plate System, Zimmer offers advanced solutions for the management of comminuted fractures and fractures in which deficient bone stock or poor bone quality is encountered. The system combines anatomically contoured periarticular plates with locking screw technology. The unique plate designs feature a transitioned profile that is thinner in the metaphyseal and thicker in the diaphyseal areas. Locking screw holes are combined with compression slots, so that the plates can be used both as locking devices and for fracture compression.

○ Precontoured plates that follow the shape of the bone

One of the most difficult challenges in the treatment of periarticular fractures is bending the plate to fit the specific profile of the bone. Zimmer's advanced periarticular plates were developed using digital laser bone-scanning technology. The data was used to guide advanced fabricating technologies in the precise manufacture of precontoured implants. The Periarticular Locking Plates closely follow the shape of the bone to create a fit that requires little or no additional bending.



Advanced fabricating technologies are guided by data from a digital laser scanner that helps to determine optimal implant contours.



○ Low-profile fixation accommodates both patient and surgeon

Zimmer's periarticular plate designs decrease in thickness toward the joint line to reduce the potential for soft-tissue irritation and to simplify any additional contouring. The reduced thickness also allows the implant to "autocontour" as the screws draw the plate toward the bone. The tapered plate shaft design, combined with specialized instrumentation, provides for submuscular passage of the plate and fixation that utilizes a minimally invasive technique.



Thick-to-thin plate profile makes the plate autocontourable

Beveled edge allows soft-tissue coverage

Double lead threads (Double the shaft thread pitch)

Head and shaft travel at same rate into plate and bone



○ The latest advancement in fixation: locking screw technology

Zimmer's locking screw technology gives surgeons the ability to create a fixed-angle construct while using familiar plating techniques.

The locking plate design does not require compression between the plate and bone to accommodate loading. Therefore, screw purchase in the bone can be achieved with a thread profile that is shallower than that of traditional screws. In turn, the shallow thread profile allows for screws with a large core diameter to accommodate loading with improved bending and shear strength.



Periarticular Self-Tapping Cortical Bone Screw

Conventional Screw



Periarticular 3.5mm Locking Screw

Zimmer Periarticular Locking Plate System components:

- Distal Lateral Femoral Plate
- 3.5mm and 5.5mm Proximal Lateral Tibial Plates
- Distal Medial and Distal Lateral Tibial Plates
- Proximal Humeral Plate
- Distal Radial Plates:
 - Volar Lateral Column
 - Volar Medial Column
 - Dorsal T
 - Dorsal Delta
 - Radial Styloid



Humeral Periarticular Fracture w/Proximal Humeral Locking Plate



Tibial Periarticular Fracture w/Proximal Lateral Tibial Locking Plate

Meeting clinical needs with a wide range of options

The Periarticular Locking Plate System was designed with the input of experienced surgeons to ensure that the components meet current clinical needs and anticipate clinical needs of the future. The plates are available in a variety of lengths, both left and right.

Ordering Information



PROXIMAL LATERAL HUMERAL LOCKING PLATES

3.5mm Proximal Lateral Humeral Locking Plate

Left	Right	Description	Holes	Length
00-2358-002-04	00-2358-001-04	Proximal Lateral Humeral Locking	Plate 4	90mm
00-2358-002-06	00-2358-001-06	Proximal Lateral Humeral Locking	Plate 6	114mm
00-2358-002-08	00-2358-001-08	Proximal Lateral Humeral Locking	Plate 8	138mm
00-2358-002-12	00-2358-001-12	Proximal Lateral Humeral Locking	Plate 12	186mm
00-2358-002-16	00-2358-001-16	Proximal Lateral Humeral Locking	Plate 16	234mm

3.5mm/2.7mm Periarticular Locking Instrument Set

Qty	
00-2360-000-02	3.5mm/2.7mm Periarticular Locking Instrument Set (Contains the following)
00-1147-071-00	Cleaning Stylet 1
00-1147-076-00	Cleaning Brush 1
00-2358-040-00	3.5mm/2.7mm Locking Screw and Instrument Case 1
00-2360-011-01	3.5mm/2.7mm Locking Plate Reduction Instrument 2
00-2360-011-02	3.5mm/2.7mm Locking Plate Reduction Sleeve 2
00-2360-012-03	Plate Reduction Spin Knob 2
00-2360-020-20	2.0mm Standard Cannula 4
00-2360-020-27	2.7mm Standard Cannula 4
00-2360-021-16	1.6mm Standard Cannula 4
00-2360-033-16	1.6mm Standard Drill-Tip Guide Wire (5 per Box) 2 Bx
00-2360-040-35	3.5mm/2.7mm Locking Screw Standard Depth Gauge 1
00-2360-041-35	3.5mm Cannulated Locking Screw Depth Gauge 1
00-2360-053-27	2.7mm Locking Screw Tap 2
00-2360-053-35	3.5mm Locking Screw Tap 2
00-2360-054-35	3.5mm Cannulated Locking Screw Tap 2
00-2360-065-00	2.5mm Screwdriver Stop Ring 1
00-2360-065-25	2.5mm Hex Standard Screwdriver 2
00-2360-066-25	2.5mm Hex Standard Cannulated Screwdriver 2
00-2360-071-27	2.7mm Standard Cannulated Drill 2
00-2360-080-00	Torque-Limiting Attachment 1
00-2360-086-00	Modular Handle 1
00-2360-088-00	3.5mm/2.7mm Cannula Inserter 1
00-2360-175-20	2.0mm Standard Drill 2
00-2360-205-27	2.7mm Standard Drill 2
00-4812-045-00	Large Hex Screwdriver 1
00-2360-050-25	2.5mm Hex Forward Captive Screwdriver 0
00-2360-051-25	2.5mm Hex Cannulated Forward Captive Screwdriver 0

Proximal Lateral Humeral Locking Plate Set

Qty	
00-2358-000-05	Proximal Lateral Humeral Locking Plate Set (Contains the following)
00-2358-002-04	Proximal Lateral Humeral Locking Plate 1
00-2358-002-06	Proximal Lateral Humeral Locking Plate 1
00-2358-002-08	Proximal Lateral Humeral Locking Plate 1
00-2358-002-12	Proximal Lateral Humeral Locking Plate 1
00-2358-002-16	Proximal Lateral Humeral Locking Plate 1
00-2358-001-04	Proximal Lateral Humeral Locking Plate 1
00-2358-001-06	Proximal Lateral Humeral Locking Plate 1
00-2358-001-08	Proximal Lateral Humeral Locking Plate 1
00-2358-001-12	Proximal Lateral Humeral Locking Plate 1
00-2358-001-16	Proximal Lateral Humeral Locking Plate 1

Proximal Lateral Humeral Plate Standard Jig Set

Qty	
00-2360-000-14	Proximal Lateral Humeral Plate Standard Jig Set (Contains the following)
00-2360-092-01	Proximal Lateral Humeral Plate Jig, Right 1
00-2360-092-02	Proximal Lateral Humeral Plate Jig, Left 1
00-2358-030-05	Proximal Lateral Humeral Locking Plate Case 1

Screw and Instrument Sets

00-2360-000-02	3.5mm/2.7mm Periarticular Locking Instrument Set
00-2359-000-02	3.5mm/2.7mm Locking Screw Set
00-2358-000-05	Proximal Lateral Humeral Locking Plate Set
00-2360-000-14	Proximal Lateral Humeral Plate Standard Jig Set

Compatible with:

Zimmer Periarticular 3.5mm Self-Tapping Cortical Screws; Zimmer Periarticular 4.0mm Cancellous Screws



3.5mm/2.7mm Locking Screw Set

Item Number	Description	Qty
00-2359-030-36	3.5mm Cannulated Locking Screw 30mm Lng	3
00-2359-035-36	3.5mm Cannulated Locking Screw 35mm Lng	3
00-2359-040-36	3.5mm Cannulated Locking Screw 40mm Lng	3
00-2359-045-36	3.5mm Cannulated Locking Screw 45mm Lng	3
00-2359-050-36	3.5mm Cannulated Locking Screw 50mm Lng	4
00-2359-055-36	3.5mm Cannulated Locking Screw 55mm Lng	4
00-2359-060-36	3.5mm Cannulated Locking Screw 60mm Lng	4
00-2359-065-36	3.5mm Cannulated Locking Screw 65mm Lng	4
00-2359-070-36	3.5mm Cannulated Locking Screw 70mm Lng	4
00-2359-075-36	3.5mm Cannulated Locking Screw 75mm Lng	3
00-2359-080-36	3.5mm Cannulated Locking Screw 80mm Lng	3
00-2359-085-36	3.5mm Cannulated Locking Screw 85mm Lng	3
00-2359-090-36	3.5mm Cannulated Locking Screw 90mm Lng	3
00-2359-030-37	3.5mm Cannulated Conical Screw 30mm Lng	2
00-2359-035-37	3.5mm Cannulated Conical Screw 35mm Lng	2
00-2359-040-37	3.5mm Cannulated Conical Screw 40mm Lng	2
00-2359-045-37	3.5mm Cannulated Conical Screw 45mm Lng	2
00-2359-050-37	3.5mm Cannulated Conical Screw 50mm Lng	2
00-2359-055-37	3.5mm Cannulated Conical Screw 55mm Lng	2
00-2359-060-37	3.5mm Cannulated Conical Screw 60mm Lng	2
00-2359-065-37	3.5mm Cannulated Conical Screw 65mm Lng	2
00-2359-070-37	3.5mm Cannulated Conical Screw 70mm Lng	2
00-2359-012-35	3.5mm Locking Screw 12mm Lng	2
00-2359-014-35	3.5mm Locking Screw 14mm Lng	2
00-2359-016-35	3.5mm Locking Screw 16mm Lng	2
00-2359-018-35	3.5mm Locking Screw 18mm Lng	2
00-2359-020-35	3.5mm Locking Screw 20mm Lng	2
00-2359-022-35	3.5mm Locking Screw 22mm Lng	2
00-2359-024-35	3.5mm Locking Screw 24mm Lng	2
00-2359-026-35	3.5mm Locking Screw 26mm Lng	2
00-2359-028-35	3.5mm Locking Screw 28mm Lng	2
00-2359-030-35	3.5mm Locking Screw 30mm Lng	2
00-2359-032-35	3.5mm Locking Screw 32mm Lng	3
00-2359-034-35	3.5mm Locking Screw 34mm Lng	3
00-2359-036-35	3.5mm Locking Screw 36mm Lng	3
00-2359-038-35	3.5mm Locking Screw 38mm Lng	3
00-2359-040-35	3.5mm Locking Screw 40mm Lng	3
00-2359-042-35	3.5mm Locking Screw 42mm Lng	3

Item Number	Description	Qty
00-2359-044-35	3.5mm Locking Screw 44mm Lng	3
00-2359-046-35	3.5mm Locking Screw 46mm Lng	3
00-2359-048-35	3.5mm Locking Screw 48mm Lng	3
00-2359-050-35	3.5mm Locking Screw 50mm Lng	3
00-2359-052-35	3.5mm Locking Screw 52mm Lng	2
00-2359-054-35	3.5mm Locking Screw 54mm Lng	2
00-2359-056-35	3.5mm Locking Screw 56mm Lng	2
00-2359-058-35	3.5mm Locking Screw 58mm Lng	2
00-2359-060-35	3.5mm Locking Screw 60mm Lng	2
00-2359-065-35	3.5mm Locking Screw 65mm Lng	2
00-2359-070-35	3.5mm Locking Screw 70mm Lng	2
00-2359-010-27*	2.7mm Locking Screw 10mm Lng	3
00-2359-012-27*	2.7mm Locking Screw 12mm Lng	3
00-2359-014-27*	2.7mm Locking Screw 14mm Lng	3
00-2359-016-27*	2.7mm Locking Screw 16mm Lng	3
00-2359-018-27*	2.7mm Locking Screw 18mm Lng	3
00-2359-020-27*	2.7mm Locking Screw 20mm Lng	3
00-2359-022-27*	2.7mm Locking Screw 22mm Lng	4
00-2359-024-27*	2.7mm Locking Screw 24mm Lng	4
00-2359-026-27*	2.7mm Locking Screw 26mm Lng	4
00-2359-028-27*	2.7mm Locking Screw 28mm Lng	4
00-2359-030-27*	2.7mm Locking Screw 30mm Lng	4
00-2359-032-27*	2.7mm Locking Screw 32mm Lng	4
00-2359-034-27*	2.7mm Locking Screw 34mm Lng	4
00-2359-036-27*	2.7mm Locking Screw 36mm Lng	4
00-2359-038-27*	2.7mm Locking Screw 38mm Lng	4
00-2359-040-27*	2.7mm Locking Screw 40mm Lng	4
00-2359-042-27*	2.7mm Locking Screw 42mm Lng	4
00-2359-044-27*	2.7mm Locking Screw 44mm Lng	4
00-2359-046-27*	2.7mm Locking Screw 46mm Lng	4
00-2359-048-27*	2.7mm Locking Screw 48mm Lng	4
00-2359-050-27*	2.7mm Locking Screw 50mm Lng	4
00-2359-052-27*	2.7mm Locking Screw 52mm Lng	3
00-2359-054-27*	2.7mm Locking Screw 54mm Lng	3
00-2359-056-27*	2.7mm Locking Screw 56mm Lng	3
00-2359-058-27*	2.7mm Locking Screw 58mm Lng	3
00-2359-060-27*	2.7mm Locking Screw 60mm Lng	3

*The proximal lateral humeral locking plate is designed for use with 3.5mm screws and is not intended for use with the 2.7mm screw.

Ordering Information (continued)



DISTAL RADIAL VOLAR LOCKING PLATES

Distal Radial Locking Plate Set (Volar Plates)		Qty
00-2358-000-04	Distal Radial Locking Plate Set	
00-2358-013-02	Distal Volar Radial Locking Plate, Lateral Column, 2 Hole, 30mm Lng, Right	1
00-2358-013-03	Distal Volar Radial Locking Plate, Lateral Column, 3 Hole, 39mm Lng, Right	1
00-2358-013-04	Distal Volar Radial Locking Plate, Lateral Column, 4 Hole, 52mm Lng, Right	1
00-2358-013-06	Distal Volar Radial Locking Plate, Lateral Column, 6 Hole, 74mm Lng, Right	1
00-2358-013-08	Distal Volar Radial Locking Plate, Lateral Column, 8 Hole, 96mm Lng, Right	1
00-2358-013-10	Distal Volar Radial Locking Plate, Lateral Column, 10 Hole, 118mm Lng, Right	1
00-2358-014-02	Distal Volar Radial Locking Plate, Lateral Column, 2 Hole, 30mm Lng, Left	1
00-2358-014-03	Distal Volar Radial Locking Plate, Lateral Column, 3 Hole, 39mm Lng, Left	1
00-2358-014-04	Distal Volar Radial Locking Plate, Lateral Column, 4 Hole, 52mm Lng, Left	1
00-2358-014-06	Distal Volar Radial Locking Plate, Lateral Column, 6 Hole, 74mm Lng, Left	1
00-2358-014-08	Distal Volar Radial Locking Plate, Lateral Column, 8 Hole, 96mm Lng, Left	1
00-2358-014-10	Distal Volar Radial Locking Plate, Lateral Column, 10 Hole, 118mm Lng, Left	1
00-2358-017-02	Distal Volar Radial Locking Plate, Medial Column, 2 Hole 32mm Lng, Right	1
00-2358-017-03	Distal Volar Radial Locking Plate, Medial Column, 3 Hole 40mm Lng, Right	1
00-2358-017-04	Distal Volar Radial Locking Plate, Medial Column, 4 Hole 54mm Lng, Right	1
00-2358-017-06	Distal Volar Radial Locking Plate, Medial Column, 6 Hole 78mm Lng, Right	1
00-2358-018-02	Distal Volar Radial Locking Plate, Medial Column, 2 Hole 32mm Lng, Left	1
00-2358-018-03	Distal Volar Radial Locking Plate, Medial Column, 3 Hole 40mm Lng, Left	1
00-2358-018-04	Distal Volar Radial Locking Plate, Medial Column, 4 Hole 54mm Lng, Left	1
00-2358-018-06	Distal Volar Radial Locking Plate, Medial Column, 6 Hole 78mm Lng, Left	1

2.4mm Locking Instrument Set		Qty
00-2358-000-05	2.4mm Locking Instrument Set	
	(Contains the following)	
00-2358-045-00	Distal Radial Locking Screw and Instrument Case	1
00-2360-022-18	2.0mm/1.8mm Standard Cannula	4
00-2360-042-24	2.4mm/1.8mm Locking Screw Depth Gauge	1
00-2360-052-24	2.4mm Locking Screw Tap	2
00-2360-062-15	1.5mm Hex Forward Captive Screwdriver, QC	2
00-2360-062-25	2.5mm Hex Forward Captive Screwdriver, QC	2
00-2360-155-18	1.8mm Standard Drill	2
00-2360-175-20	2.0mm QC Drill Bit	2
00-4806-121-24	2.4mm QC Drill Bit (for Gliding Hole)	2
00-4808-024-01	2.4mm/1.8mm Double Drill Sleeve	1
00-4811-015-00	Screwdriver Handle, ZPS Mini, Stainless Steel	1
00-4901-012-15	1.25mm Dia K-Wire, One End Trocar., 6" Long	2
00-4901-016-15	1.6mm Dia K-Wire, One end Trocar., 6" long	2
00-2348-035-00	3.5mm Dual-Compression Drill Guide	1
00-4806-110-25	2.5mm Drill Bit, 110mm	2
00-4806-110-35	3.5mm Drill Bit, 110mm (for Gliding Hole)	2
00-4808-035-01	3.5mm/2.5mm Double Drill Sleeve	1
00-4808-035-02	3.5mm/2.5mm Drill Sleeve	1
00-4810-002-01	Small Depth Gauge	1
00-4811-035-00	T-Handle, QC	1
00-4811-110-35	3.5mm Tap	2
00-4812-001-00	Screw Forceps	1
00-4812-035-00	Small Hex Screwdriver, 2.5mm Hex	1
00-4812-035-05	Small Holding Sleeve	1
00-4819-051-00	Pin Cutter (Used to cut 1.8mm Locking Pegs)	1

Also Available	
00-2358-027-03	Radial Styloid Locking Plate, 3 Hole, 34mm Lng, Right
00-2358-027-05	Radial Styloid Locking Plate, 5 Hole, 51mm Lng, Right
00-2358-028-03	Radial Styloid Locking Plate, 3 Hole, 34mm Lng, Left
00-2358-028-05	Radial Styloid Locking Plate, 5 Hole, 51mm Lng, Left

Periarticular Distal Radial Standard Jig Set		Qty
00-2360-000-23	Periarticular Distal Radial Standard Jig Set (Contains the following)	
00-2360-096-01	Volar Lateral Column Jig, Right	1
00-2360-096-02	Volar Lateral Column Jig, Left	1
00-2360-097-01	Volar Medial Column Jig, Right	1
00-2360-097-02	Volar Medial Column Jig, Left	1
00-2360-098-01	Dorsal T Jig, Right	1
00-2360-098-02	Dorsal T Jig, Left	1
00-2360-099-01	Dorsal Delta Jig, Right	1
00-2360-099-02	Dorsal Delta Jig, Left	1
00-2360-025-05	Dorsal Radial Plate and Jig Plate	1

Screw and Instrument Sets	
00-2360-000-03	2.4mm Locking Instrument Set
00-2359-000-03	2.4mm Locking Screw Set

Compatible with:
Zimmer Periarticular 3.5mm Self-Tapping Cortical Screws with 2.7mm Head; *Zimmer* 2.7mm Mini-Fragment Cortical Screws



2.4mm Locking Screw Set

Item Number	Description	Qty
00-2359-008-24	2.4mm Locking Screw 8mm Lng	4
00-2359-010-24	2.4mm Locking Screw 10mm Lng	4
00-2359-012-24	2.4mm Locking Screw 12mm Lng	4
00-2359-014-24	2.4mm Locking Screw 14mm Lng	6
00-2359-016-24	2.4mm Locking Screw 16mm Lng	6
00-2359-018-24	2.4mm Locking Screw 18mm Lng	6
00-2359-020-24	2.4mm Locking Screw 20mm Lng	6
00-2359-022-24	2.4mm Locking Screw 22mm Lng	4
00-2359-024-24	2.4mm Locking Screw 24mm Lng	4
00-2359-026-24	2.4mm Locking Screw 26mm Lng	4
00-2359-028-24	2.4mm Locking Screw 28mm Lng	4
00-2359-030-24	2.4mm Locking Screw 30mm Lng	4
00-2359-032-24	2.4mm Locking Screw 32mm Lng	2
00-2359-034-24	2.4mm Locking Screw 34mm Lng	2
00-2359-036-24	2.4mm Locking Screw 36mm Lng	2
00-2359-038-24	2.4mm Locking Screw 38mm Lng	2
00-2359-040-24	2.4mm Locking Screw 40mm Lng	2
00-2359-018-18	1.8mm Locking Peg 18mm Lng	4
00-2359-020-18	1.8mm Locking Peg 20mm Lng	4
00-2359-022-18	1.8mm Locking Peg 22mm Lng	4
00-2359-024-18	1.8mm Locking Peg 24mm Lng	4
00-2359-026-18	1.8mm Locking Peg 26mm Lng	4
00-2359-028-18	1.8mm Locking Peg 28mm Lng	4
00-2359-030-18	1.8mm Locking Peg 30mm Lng	4
00-2359-040-18	1.8mm Locking Peg 40mm Lng	4
00-2359-008-25	2.4mm Conical Screw 8mm Lng	4
00-2359-010-25	2.4mm Conical Screw 10mm Lng	4
00-2359-012-25	2.4mm Conical Screw 12mm Lng	4
00-2359-014-25	2.4mm Conical Screw 14mm Lng	6
00-2359-016-25	2.4mm Conical Screw 16mm Lng	6
00-2359-018-25	2.4mm Conical Screw 18mm Lng	6
00-2359-020-25	2.4mm Conical Screw 20mm Lng	6
00-2359-022-25	2.4mm Conical Screw 22mm Lng	4
00-2359-024-25	2.4mm Conical Screw 24mm Lng	4
00-2359-026-25	2.4mm Conical Screw 26mm Lng	4
00-2359-028-25	2.4mm Conical Screw 28mm Lng	4
00-2359-030-25	2.4mm Conical Screw 30mm Lng	4
00-2359-032-25	2.4mm Conical Screw 32mm Lng	2
00-2359-034-25	2.4mm Conical Screw 34mm Lng	2
00-2359-036-25	2.4mm Conical Screw 36mm Lng	2
00-2359-038-25	2.4mm Conical Screw 38mm Lng	2
00-2359-040-25	2.4mm Conical Screw 40mm Lng	2

Existing Screws Included In Set No. 00-2359-000-03

Item Number	Description	Qty
00-2348-008-35	3.5mm Cortical Self-Tapping (2.7mm Head) Screw 8mm Lng	4
00-2348-010-35	3.5mm Cortical Self-Tapping (2.7mm Head) Screw 10mm Lng	4
00-2348-012-35	3.5mm Cortical Self-Tapping (2.7mm Head) Screw 12mm Lng	6
00-2348-014-35	3.5mm Cortical Self-Tapping (2.7mm Head) Screw 14mm Lng	6
00-2348-016-35	3.5mm Cortical Self-Tapping (2.7mm Head) Screw 16mm Lng	6
00-2348-018-35	3.5mm Cortical Self-Tapping (2.7mm Head) Screw 18mm Lng	6
00-2348-020-35	3.5mm Cortical Self-Tapping (2.7mm Head) Screw 20mm Lng	6
00-2348-022-35	3.5mm Cortical Self-Tapping (2.7mm Head) Screw 22mm Lng	6
00-2348-024-35	3.5mm Cortical Self-Tapping (2.7mm Head) Screw 24mm Lng	6
00-2348-026-35	3.5mm Cortical Self-Tapping (2.7mm Head) Screw 26mm Lng	6
00-2348-028-35	3.5mm Cortical Self-Tapping (2.7mm Head) Screw 28mm Lng	6
00-2348-030-35	3.5mm Cortical Self-Tapping (2.7mm Head) Screw 30mm Lng	6
00-2348-032-35	3.5mm Cortical Self-Tapping (2.7mm Head) Screw 32mm Lng	4
00-2348-034-35	3.5mm Cortical Self-Tapping (2.7mm Head) Screw 34mm Lng	4
00-2348-036-35	3.5mm Cortical Self-Tapping (2.7mm Head) Screw 36mm Lng	4
00-2348-038-35	3.5mm Cortical Self-Tapping (2.7mm Head) Screw 38mm Lng	4
00-2348-040-35	3.5mm Cortical Self-Tapping (2.7mm Head) Screw 40mm Lng	4

Ordering Information (continued)



DISTAL RADIAL DORSAL LOCKING PLATES

Distal Radial Locking Plate Set (Dorsal T-Plates)		Qty
00-2358-000-04	Distal Radial Locking Plate Set	
00-2358-021-02	Distal Dorsal T Radial Locking Plate, 2 Hole, 36mm Lng, Right	1
00-2358-021-03	Distal Dorsal T Radial Locking Plate, 3 Hole, 44mm Lng, Right	1
00-2358-021-04	Distal Dorsal T Radial Locking Plate, 4 Hole, 56mm Lng, Right	1
00-2358-021-06	Distal Dorsal T Radial Locking Plate, 6 Hole, 77mm Lng, Right	1
00-2358-021-08	Distal Dorsal T Radial Locking Plate, 8 Hole, 98mm Lng, Right	1
00-2358-021-10	Distal Dorsal T Radial Locking Plate, 10 Hole, 119mm Lng, Right	1
00-2358-022-02	Distal Dorsal T Radial Locking Plate, 2 Hole, 36mm Lng, Left	1
00-2358-022-03	Distal Dorsal T Radial Locking Plate, 3 Hole, 44mm Lng, Left	1
00-2358-022-04	Distal Dorsal T Radial Locking Plate, 4 Hole, 56mm Lng, Left	1
00-2358-022-06	Distal Dorsal T Radial Locking Plate, 6 Hole, 77mm Lng, Left	1
00-2358-022-08	Distal Dorsal T Radial Locking Plate, 8 Hole, 98mm Lng, Left	1
00-2358-022-10	Distal Dorsal T Radial Locking Plate, 10 Hole, 119mm Lng, Left	1
00-2358-025-01	Distal Dorsal Delta Radial Locking Plate, 1 Hole, 40mm Lng, Right	1
00-2358-025-02	Distal Dorsal Delta Radial Locking Plate, 2 Hole, 52mm Lng, Right	1
00-2358-025-04	Distal Dorsal Delta Radial Locking Plate, 4 Hole, 74mm Lng, Right	1
00-2358-025-06	Distal Dorsal Delta Radial Locking Plate, 6 Hole, 95mm Lng, Right	1
00-2358-025-08	Distal Dorsal Delta Radial Locking Plate, 8 Hole, 117mm Lng, Right	1
00-2358-025-10	Distal Dorsal Delta Radial Locking Plate, 10 Hole, 138mm Lng, Right	1
00-2358-026-01	Distal Dorsal Delta Radial Locking Plate, 1 Hole, 40mm Lng, Left	1
00-2358-026-02	Distal Dorsal Delta Radial Locking Plate, 2 Hole, 52mm Lng, Left	1
00-2358-026-04	Distal Dorsal Delta Radial Locking Plate, 4 Hole, 74mm Lng, Left	1
00-2358-026-06	Distal Dorsal Delta Radial Locking Plate, 6 Hole, 95mm Lng, Left	1
00-2358-026-08	Distal Dorsal Delta Radial Locking Plate, 8 Hole, 117mm Lng, Left	1
00-2358-026-10	Distal Dorsal Delta Radial Locking Plate, 10 Hole, 138mm Lng, Left	1

2.4mm Locking Instrument Set		Qty
00-2360-000-03	2.4mm Locking Instrument Set	
	(Contains the following)	
00-2358-045-00	Distal Radial Locking Screw and Instrument Case	1
00-2360-022-18	2.0mm/1.8mm Standard Cannula	4
00-2360-042-24	2.4mm/1.8mm Locking Screw Depth Gauge	1
00-2360-052-24	2.4mm Locking Screw Tap	2
00-2360-062-15	1.5mm Hex Forward Captive Screwdriver, QC	2
00-2360-062-25	2.5mm Hex Forward Captive Screwdriver, QC	2
00-2360-155-18	1.8mm Standard Drill	2
00-2360-175-20	2.0mm QC Drill Bit	2
00-4806-121-24	2.4mm QC Drill Bit (for Gliding Hole)	2
00-4808-024-01	2.4mm/1.8mm Double Drill Sleeve	1
00-4811-015-00	Screwdriver Handle, ZPS Mini, Stainless Steel	1
00-4901-012-15	1.25mm Dia K-Wire, One End Trocar, 6" Long	2
00-4901-016-15	1.6mm Dia K-Wire, One End Trocar, 6" Long	2
00-2348-035-00	3.5mm Dual-Compression Drill Guide	1
00-4806-110-25	2.5mm Drill Bit, 110mm	2
00-4806-110-35	3.5mm Drill Bit, 110mm (for Gliding Hole)	2
00-4808-035-01	3.5mm/2.5mm Double Drill Sleeve	1
00-4808-035-02	3.5mm/2.5mm Drill Sleeve	1
00-4810-002-01	Small Depth Gauge	1
00-4811-035-00	T-Handle, QC	1
00-4811-110-35	3.5mm Tap	2
00-4812-001-00	Screw Forceps	1
00-4812-035-00	Small Hex Screwdriver, 2.5mm Hex	1
00-4812-035-05	Small Holding Sleeve	1
00-4819-051-00	Pin Cutter (Used to cut 1.8mm Locking Pegs)	1
00-4812-015-05	Mini Holding Sleeve	1
00-4812-015-01	Mini Hex Screwdriver Shaft	1

Periarticular Distal Radial Standard Jig Set		Qty
00-2360-000-23	Periarticular Distal Radial Standard Jig Set	
	(Contains the following)	
00-2360-096-01	Volar Lateral Column Jig, Right	1
00-2360-096-02	Volar Lateral Column Jig, Left	1
00-2360-097-01	Volar Medial Column Jig, Right	1
00-2360-097-02	Volar Medial Column Jig, Left	1
00-2360-098-01	Dorsal T Jig, Right	1
00-2360-098-02	Dorsal T Jig, Left	1
00-2360-099-01	Dorsal Delta Jig, Right	1
00-2360-099-02	Dorsal Delta Jig, Left	1
00-2360-025-05	Dorsal Radial Plate and Jig Plate	1

Screw and Instrument Sets	
00-2360-000-03	2.4mm Locking Instrument Set
00-2359-000-03	2.4mm Locking Screw Set

Compatible with:

Zimmer Periarticular 3.5mm Self-Tapping Cortical Screws with 2.7mm Head; Zimmer 2.7mm Mini-Fragment Cortical Screws; Zimmer Small-Fragment Instrument Set



2.4mm Locking Screw Set

Item Number	Description	Qty
00-2359-008-24	2.4mm Locking Screw 8mm Lng	4
00-2359-010-24	2.4mm Locking Screw 10mm Lng	4
00-2359-012-24	2.4mm Locking Screw 12mm Lng	4
00-2359-014-24	2.4mm Locking Screw 14mm Lng	6
00-2359-016-24	2.4mm Locking Screw 16mm Lng	6
00-2359-018-24	2.4mm Locking Screw 18mm Lng	6
00-2359-020-24	2.4mm Locking Screw 20mm Lng	6
00-2359-022-24	2.4mm Locking Screw 22mm Lng	4
00-2359-024-24	2.4mm Locking Screw 24mm Lng	4
00-2359-026-24	2.4mm Locking Screw 26mm Lng	4
00-2359-028-24	2.4mm Locking Screw 28mm Lng	4
00-2359-030-24	2.4mm Locking Screw 30mm Lng	4
00-2359-032-24	2.4mm Locking Screw 32mm Lng	2
00-2359-034-24	2.4mm Locking Screw 34mm Lng	2
00-2359-036-24	2.4mm Locking Screw 36mm Lng	2
00-2359-038-24	2.4mm Locking Screw 38mm Lng	2
00-2359-040-24	2.4mm Locking Screw 40mm Lng	2
00-2359-018-18	1.8mm Locking Peg 18mm Lng	4
00-2359-020-18	1.8mm Locking Peg 20mm Lng	4
00-2359-022-18	1.8mm Locking Peg 22mm Lng	4
00-2359-024-18	1.8mm Locking Peg 24mm Lng	4
00-2359-026-18	1.8mm Locking Peg 26mm Lng	4
00-2359-028-18	1.8mm Locking Peg 28mm Lng	4
00-2359-030-18	1.8mm Locking Peg 30mm Lng	4
00-2359-040-18	1.8mm Locking Peg 40mm Lng	4
00-2359-008-25	2.4mm Conical Screw 8mm Lng	4
00-2359-010-25	2.4mm Conical Screw 10mm Lng	4
00-2359-012-25	2.4mm Conical Screw 12mm Lng	4
00-2359-014-25	2.4mm Conical Screw 14mm Lng	6
00-2359-016-25	2.4mm Conical Screw 16mm Lng	6
00-2359-018-25	2.4mm Conical Screw 18mm Lng	6
00-2359-020-25	2.4mm Conical Screw 20mm Lng	6
00-2359-022-25	2.4mm Conical Screw 22mm Lng	4
00-2359-024-25	2.4mm Conical Screw 24mm Lng	4
00-2359-026-25	2.4mm Conical Screw 26mm Lng	4
00-2359-028-25	2.4mm Conical Screw 28mm Lng	4
00-2359-030-25	2.4mm Conical Screw 30mm Lng	4
00-2359-032-25	2.4mm Conical Screw 32mm Lng	2
00-2359-034-25	2.4mm Conical Screw 34mm Lng	2
00-2359-036-25	2.4mm Conical Screw 36mm Lng	2
00-2359-038-25	2.4mm Conical Screw 38mm Lng	2
00-2359-040-25	2.4mm Conical Screw 40mm Lng	2

Existing Screws Included in Set No. 00-2359-000-03

Item Number	Description	Qty
00-2348-008-35	3.5mm Cortical Self-Tapping (2.7mm Head) Screw 8mm Lng	4
00-2348-010-35	3.5mm Cortical Self-Tapping (2.7mm Head) Screw 10mm Lng	4
00-2348-012-35	3.5mm Cortical Self-Tapping (2.7mm Head) Screw 12mm Lng	6
00-2348-014-35	3.5mm Cortical Self-Tapping (2.7mm Head) Screw 14mm Lng	6
00-2348-016-35	3.5mm Cortical Self-Tapping (2.7mm Head) Screw 16mm Lng	6
00-2348-018-35	3.5mm Cortical Self-Tapping (2.7mm Head) Screw 18mm Lng	6
00-2348-020-35	3.5mm Cortical Self-Tapping (2.7mm Head) Screw 20mm Lng	6
00-2348-022-35	3.5mm Cortical Self-Tapping (2.7mm Head) Screw 22mm Lng	6
00-2348-024-35	3.5mm Cortical Self-Tapping (2.7mm Head) Screw 24mm Lng	6
00-2348-026-35	3.5mm Cortical Self-Tapping (2.7mm Head) Screw 26mm Lng	6
00-2348-028-35	3.5mm Cortical Self-Tapping (2.7mm Head) Screw 28mm Lng	6
00-2348-030-35	3.5mm Cortical Self-Tapping (2.7mm Head) Screw 30mm Lng	6
00-2348-032-35	3.5mm Cortical Self-Tapping (2.7mm Head) Screw 32mm Lng	4
00-2348-034-35	3.5mm Cortical Self-Tapping (2.7mm Head) Screw 34mm Lng	4
00-2348-036-35	3.5mm Cortical Self-Tapping (2.7mm Head) Screw 36mm Lng	4
00-2348-038-35	3.5mm Cortical Self-Tapping (2.7mm Head) Screw 38mm Lng	4
00-2348-040-35	3.5mm Cortical Self-Tapping (2.7mm Head) Screw 40mm Lng	4

Ordering Information (continued)



DISTAL LATERAL FEMORAL LOCKING PLATES

5.5mm Distal Lateral Femoral Locking Plates

Left	Right	Description	Holes	Length
00-2357-102-06	00-2357-101-06	Distal Lateral Femoral Locking Plate	6	159mm
00-2357-102-10	00-2357-101-10	Distal Lateral Femoral Locking Plate	10	223mm
00-2357-102-14	00-2357-101-14	Distal Lateral Femoral Locking Plate	14	287mm
00-2357-102-18	00-2357-101-18	Distal Lateral Femoral Locking Plate	18	349mm

5.5mm/4.5mm Periarticular Locking Instrument Set Qty

Item Number	Description	Qty
00-2360-000-01	5.5mm/4.5mm Periarticular Locking Instrument Set (Contains the following)	
00-1147-073-00	Cleaning Stylet	1
00-1147-078-00	Cleaning Brush	1
00-2358-035-00	5.5mm/4.5mm Locking Screw and Instrument Case	1
00-2360-012-01	5.5mm/4.5mm Plate Reduction Instrument	2
00-2360-012-02	5.5mm/4.5mm Plate Reduction Sleeve	2
00-2360-012-03	Plate Reduction Spin Knob	2
00-2360-020-37	3.7mm Standard Cannula	4
00-2360-021-32	3.2mm Standard Cannula	4
00-2360-033-32	3.2mm Standard Drill-Tip Guide Wire (5 per Box)	2 Bx
00-2360-040-45	4.5mm Locking Screw Standard Depth Gauge	1
00-2360-041-55	5.5mm Cannulated Locking Screw Depth Gauge	1
00-2360-053-45	4.5mm Locking Screw Tap	2
00-2360-054-55	5.5mm Cannulated Locking Screw Tap	2
00-2360-065-05	5.0mm Screwdriver Stop Ring	1 Bx
00-2360-065-50	5.0mm Hex Standard Screwdriver	2
00-2360-066-50	5.0mm Hex Standard Cannulated Screwdriver	2
00-2360-071-47	4.7mm Standard Cannulated Drill	2
00-2360-080-00	Torque-Limiting Attachment	1
00-2360-085-00	Guide-Wire Insertor	1
00-2360-086-00	Modular Handle	1
00-2360-087-00	Ratcheting Modular Handle	1
00-2360-088-00	5.5mm/4.5mm Cannula Insertor	1
00-2360-090-04	5.5mm/4.5mm Standard Jig Sleeve	4
00-2360-225-37	3.7mm Standard Drill	2
00-2360-050-50	5.0mm Hex Forward Captive Screwdriver	0
00-2360-051-50	5.0mm Hex Cannulated Forward Captive Screwdriver	0

Periarticular Distal Lateral Femoral Locking Plate Set Qty

Item Number	Description	Qty
00-2357-000-13	Periarticular Distal Lateral Femoral Locking Plate Set (Contains the following)	
00-2357-102-06	Distal Lateral Femoral Locking Plate, 6 Hole, Left	1
00-2357-102-10	Distal Lateral Femoral Locking Plate, 10 Hole, Left	1
00-2357-102-14	Distal Lateral Femoral Locking Plate, 14 Hole, Left	1
00-2357-102-18	Distal Lateral Femoral Locking Plate, 18 Hole, Left	1
00-2357-101-06	Distal Lateral Femoral Locking Plate, 6 Hole, Right	1
00-2357-101-10	Distal Lateral Femoral Locking Plate, 10 Hole, Right	1
00-2357-101-14	Distal Lateral Femoral Locking Plate, 14 Hole, Right	1
00-2357-101-18	Distal Lateral Femoral Locking Plate, 18 Hole, Right	1

Periarticular Distal Lateral Femoral Plate Standard Jig Set Qty

Item Number	Description	Qty
00-2360-000-11	Periarticular Distal Lateral Femoral Plate Standard Jig Set (Contains the following)	
00-2360-090-01	Distal Lateral Femoral Plate Jig, Right	1
00-2360-090-02	Distal Lateral Femoral Plate Jig, Left	1
00-2358-010-00	Distal Lateral Femoral Plate Jig Case	1

Screw and Instrument Sets

00-2359-000-01	5.5mm/4.5mm Locking Screw Set
----------------	-------------------------------

Compatible with:

Zimmer Periarticular 4.5mm Self-Tapping Cortical Screws; Zimmer Periarticular 6.5mm Cancellous Screws; Zimmer Basic Instrument Set; Zimmer Standard Screw Set



5.5mm/4.5mm Locking Screw Set

Item Number	Description	Qty	Item Number	Description	Qty
00-2359-050-55	5.5mm Cannulated Locking Screw 50mm Lng	4	00-2359-016-45	4.5mm Locking Screw 16mm Lng	2
00-2359-055-55	5.5mm Cannulated Locking Screw 55mm Lng	4	00-2359-018-45	4.5mm Locking Screw 18mm Lng	2
00-2359-060-55	5.5mm Cannulated Locking Screw 60mm Lng	4	00-2359-020-45	4.5mm Locking Screw 20mm Lng	2
00-2359-065-55	5.5mm Cannulated Locking Screw 65mm Lng	4	00-2359-022-45	4.5mm Locking Screw 22mm Lng	2
00-2359-070-55	5.5mm Cannulated Locking Screw 70mm Lng	4	00-2359-024-45	4.5mm Locking Screw 24mm Lng	2
00-2359-075-55	5.5mm Cannulated Locking Screw 75mm Lng	4	00-2359-026-45	4.5mm Locking Screw 26mm Lng	2
00-2359-080-55	5.5mm Cannulated Locking Screw 80mm Lng	4	00-2359-028-45	4.5mm Locking Screw 28mm Lng	4
00-2359-085-55	5.5mm Cannulated Locking Screw 85mm Lng	4	00-2359-030-45	4.5mm Locking Screw 30mm Lng	4
00-2359-090-55	5.5mm Cannulated Locking Screw 90mm Lng	2	00-2359-032-45	4.5mm Locking Screw 32mm Lng	4
00-2359-095-55	5.5mm Cannulated Locking Screw 95mm Lng	2	00-2359-034-45	4.5mm Locking Screw 34mm Lng	4
00-2359-100-55	5.5mm Cannulated Locking Screw 100mm Lng	2	00-2359-036-45	4.5mm Locking Screw 36mm Lng	4
00-2359-050-56	5.5mm Cannulated Conical Screw 50mm Lng	2	00-2359-038-45	4.5mm Locking Screw 38mm Lng	4
00-2359-055-56	5.5mm Cannulated Conical Screw 55mm Lng	2	00-2359-040-45	4.5mm Locking Screw 40mm Lng	4
00-2359-060-56	5.5mm Cannulated Conical Screw 60mm Lng	2	00-2359-042-45	4.5mm Locking Screw 42mm Lng	4
00-2359-065-56	5.5mm Cannulated Conical Screw 65mm Lng	2	00-2359-044-45	4.5mm Locking Screw 44mm Lng	4
00-2359-070-56	5.5mm Cannulated Conical Screw 70mm Lng	2	00-2359-046-45	4.5mm Locking Screw 46mm Lng	4
00-2359-075-56	5.5mm Cannulated Conical Screw 75mm Lng	2	00-2359-048-45	4.5mm Locking Screw 48mm Lng	4
00-2359-080-56	5.5mm Cannulated Conical Screw 80mm Lng	2	00-2359-050-45	4.5mm Locking Screw 50mm Lng	4
00-2359-085-56	5.5mm Cannulated Conical Screw 85mm Lng	2	00-2359-055-45	4.5mm Locking Screw 55mm Lng	4
00-2359-090-56	5.5mm Cannulated Conical Screw 90mm Lng	2	00-2359-060-45	4.5mm Locking Screw 60mm Lng	2
00-2359-012-45	4.5mm Locking Screw 12mm Lng	2	00-2359-065-45	4.5mm Locking Screw 65mm Lng	2
00-2359-014-45	4.5mm Locking Screw 14mm Lng	2	00-2359-070-45	4.5mm Locking Screw 70mm Lng	2



PROXIMAL LATERAL TIBIAL LOCKING PLATES

5.5mm Proximal Lateral Tibial Locking Plates

Left	Right	Description	Holes	Length
00-2357-006-04	00-2357-005-04	5.5mm Proximal Lateral Tibial Locking Plate	4	97mm
00-2357-006-06	00-2357-005-06	5.5mm Proximal Lateral Tibial Locking Plate	6	128mm
00-2357-006-08	00-2357-005-08	5.5mm Proximal Lateral Tibial Locking Plate	8	158mm
00-2357-006-10	00-2357-005-10	5.5mm Proximal Lateral Tibial Locking Plate	10	189mm
00-2357-006-12	00-2357-005-12	5.5mm Proximal Lateral Tibial Locking Plate	12	219mm
00-2357-006-14	00-2357-005-14	5.5mm Proximal Lateral Tibial Locking Plate	14	250mm

5.5mm/4.5mm Periarticular Locking Instrument Set

Item Number	Description	Qty
00-2360-000-01	5.5mm/4.5mm Periarticular Locking Instrument Set (Contains the following)	
00-1147-073-00	Cleaning Stylet	1
00-1147-078-00	Cleaning Brush	1
00-2358-035-00	5.5mm/4.5mm Locking Screw and Instrument Case	1
00-2360-012-01	5.5mm/4.5mm Plate Reduction Instrument	2
00-2360-012-02	5.5mm/4.5mm Plate Reduction Sleeve	2
00-2360-012-03	Plate Reduction Spin Knob	2
00-2360-020-37	3.7mm Standard Cannula	4
00-2360-021-32	3.2mm Standard Cannula	4
00-2360-033-32	3.2mm Standard Drill-Tip Guide Wire (5 per Box)	2 Bx
00-2360-040-45	4.5mm Locking Screw Standard Depth Gauge	1
00-2360-041-55	5.5mm Cannulated Locking Screw Depth Gauge	1
00-2360-053-45	4.5mm Locking Screw Tap	2
00-2360-054-55	5.5mm Cannulated Locking Screw Tap	2
00-2360-065-05	5.0mm Screwdriver Stop Ring	1 Bx
00-2360-065-50	5.0mm Hex Standard Screwdriver	2
00-2360-066-50	5.0mm Hex Standard Cannulated Screwdriver	2
00-2360-071-47	4.7mm Standard Cannulated Drill	2
00-2360-080-00	Torque-Limiting Attachment	1
00-2360-085-00	Guide-Wire Inserter	1
00-2360-086-00	Modular Handle	1
00-2360-087-00	Ratcheting Modular Handle	1
00-2360-088-00	5.5mm/4.5mm Cannula Inserter	1
00-2360-090-04	5.5mm/4.5mm Standard Jig Sleeve	4
00-2360-225-37	3.7mm Standard Drill	2
00-2360-050-50	5.0mm Hex Forward Captive Screwdriver	0
00-2360-051-50	5.0mm Hex Cannulated Forward Captive Screwdriver	0

5.5mm Proximal Lateral Tibial Locking Plate Set

Item Number	Description	Qty
00-2357-000-08	5.5mm Proximal Lateral Tibial Locking Plate Set (Contains the following)	
00-2357-006-00	5.5mm Proximal Lateral Tibial Locking Plate, 4 Hole, Left	1
00-2357-006-06	5.5mm Proximal Lateral Tibial Locking Plate, 6 Hole, Left	1
00-2357-006-08	5.5mm Proximal Lateral Tibial Locking Plate, 8 Hole, Left	1
00-2357-006-10	5.5mm Proximal Lateral Tibial Locking Plate, 10 Hole, Left	1
00-2357-006-12	5.5mm Proximal Lateral Tibial Locking Plate, 12 Hole, Left	1
00-2357-006-14	5.5mm Proximal Lateral Tibial Locking Plate, 14 Hole, Left	1
00-2357-005-04	5.5mm Proximal Lateral Tibial Locking Plate, 4 Hole, Right	1
00-2357-005-06	5.5mm Proximal Lateral Tibial Locking Plate, 6 Hole, Right	1
00-2357-005-08	5.5mm Proximal Lateral Tibial Locking Plate, 8 Hole, Right	1
00-2357-005-10	5.5mm Proximal Lateral Tibial Locking Plate, 10 Hole, Right	1
00-2357-005-12	5.5mm Proximal Lateral Tibial Locking Plate, 12 Hole, Right	1
00-2357-005-14	5.5mm Proximal Lateral Tibial Locking Plate, 14 Hole, Right	1

5.5mm Proximal Tibial Standard Jig Set

Item Number	Description	Qty
00-2360-000-12	5.5mm Proximal Tibial Standard Jig Set (Contains the following)	
00-2360-091-01	5.5mm Proximal Lateral Tibial Plate Jig, Right	1
00-2360-091-02	5.5mm Proximal Lateral Tibial Plate Jig, Left	1
00-2358-015-00	5.5mm Proximal Lateral Tibial Plate and Jig Case	1

Screw and Instrument Sets

00-2360-000-01	5.5mm/4.5mm Periarticular Locking Instrument Set
00-2359-000-01	5.5mm/4.5mm Locking Screw Set

Compatible with:

Zimmer Periarticular 4.5mm Self-Tapping Cortical Screws; Zimmer Periarticular 6.5mm Cancellous Screws; Zimmer Basic Instrument Set; Zimmer Standard Screw Set



5.5mm/4.5mm Locking Screw Set

Item Number	Description	Qty	Item Number	Description	Qty
00-2359-050-55	5.5mm Cannulated Locking Screw 50mm Lng	4	00-2359-016-45	4.5mm Locking Screw 16mm Lng	2
00-2359-055-55	5.5mm Cannulated Locking Screw 55mm Lng	4	00-2359-018-45	4.5mm Locking Screw 18mm Lng	2
00-2359-060-55	5.5mm Cannulated Locking Screw 60mm Lng	4	00-2359-020-45	4.5mm Locking Screw 20mm Lng	2
00-2359-065-55	5.5mm Cannulated Locking Screw 65mm Lng	4	00-2359-022-45	4.5mm Locking Screw 22mm Lng	2
00-2359-070-55	5.5mm Cannulated Locking Screw 70mm Lng	4	00-2359-024-45	4.5mm Locking Screw 24mm Lng	2
00-2359-075-55	5.5mm Cannulated Locking Screw 75mm Lng	4	00-2359-026-45	4.5mm Locking Screw 26mm Lng	2
00-2359-080-55	5.5mm Cannulated Locking Screw 80mm Lng	4	00-2359-028-45	4.5mm Locking Screw 28mm Lng	4
00-2359-085-55	5.5mm Cannulated Locking Screw 85mm Lng	4	00-2359-030-45	4.5mm Locking Screw 30mm Lng	4
00-2359-090-55	5.5mm Cannulated Locking Screw 90mm Lng	2	00-2359-032-45	4.5mm Locking Screw 32mm Lng	4
00-2359-095-55	5.5mm Cannulated Locking Screw 95mm Lng	2	00-2359-034-45	4.5mm Locking Screw 34mm Lng	4
00-2359-100-55	5.5mm Cannulated Locking Screw 100mm Lng	2	00-2359-036-45	4.5mm Locking Screw 36mm Lng	4
00-2359-050-56	5.5mm Cannulated Conical Screw 50mm Lng	2	00-2359-038-45	4.5mm Locking Screw 38mm Lng	4
00-2359-055-56	5.5mm Cannulated Conical Screw 55mm Lng	2	00-2359-040-45	4.5mm Locking Screw 40mm Lng	4
00-2359-060-56	5.5mm Cannulated Conical Screw 60mm Lng	2	00-2359-042-45	4.5mm Locking Screw 42mm Lng	4
00-2359-065-56	5.5mm Cannulated Conical Screw 65mm Lng	2	00-2359-044-45	4.5mm Locking Screw 44mm Lng	4
00-2359-070-56	5.5mm Cannulated Conical Screw 70mm Lng	2	00-2359-046-45	4.5mm Locking Screw 46mm Lng	4
00-2359-075-56	5.5mm Cannulated Conical Screw 75mm Lng	2	00-2359-048-45	4.5mm Locking Screw 48mm Lng	4
00-2359-080-56	5.5mm Cannulated Conical Screw 80mm Lng	2	00-2359-050-45	4.5mm Locking Screw 50mm Lng	4
00-2359-085-56	5.5mm Cannulated Conical Screw 85mm Lng	2	00-2359-055-45	4.5mm Locking Screw 55mm Lng	4
00-2359-090-56	5.5mm Cannulated Conical Screw 90mm Lng	2	00-2359-060-45	4.5mm Locking Screw 60mm Lng	2
00-2359-012-45	4.5mm Locking Screw 12mm Lng	2	00-2359-065-45	4.5mm Locking Screw 65mm Lng	2
00-2359-014-45	4.5mm Locking Screw 14mm Lng	2	00-2359-070-45	4.5mm Locking Screw 70mm Lng	2

Ordering Information (continued)



DISTAL TIBIAL LOCKING PLATES

3.5mm Distal Medial Tibial Locking Plates

Left	Right	Description	Holes	Length
00-2357-008-06	00-2357-007-06	Distal Medial Tibial Locking Plate	6	120mm
00-2357-008-08	00-2357-007-08	Distal Medial Tibial Locking Plate	8	144mm
00-2357-008-10	00-2357-007-10	Distal Medial Tibial Locking Plate	10	168mm
00-2357-008-14	00-2357-007-14	Distal Medial Tibial Locking Plate	14	216mm
00-2357-008-18	00-2357-007-18	Distal Medial Tibial Locking Plate	18	264mm

3.5mm Distal Lateral Tibial Locking Plates

Left	Right	Description	Holes	Length
00-2357-010-06	00-2357-009-06	Distal Lateral Tibial Locking Plate	6	94mm
00-2357-010-08	00-2357-009-08	Distal Lateral Tibial Locking Plate	8	118mm
00-2357-010-10	00-2357-009-10	Distal Lateral Tibial Locking Plate	10	142mm
00-2357-010-14	00-2357-009-14	Distal Lateral Tibial Locking Plate	14	189mm
00-2357-010-18	00-2357-009-18	Distal Lateral Tibial Locking Plate	18	237mm

3.5mm/2.7mm Periarticular Locking Instrument Set

	Qty
00-2360-000-02 3.5mm/2.7mm Periarticular Locking Instrument Set (Contains the following)	
00-1147-071-00 Cleaning Stylet	1
00-1147-076-00 Cleaning Brush	1
00-2358-040-00 3.5mm/2.7mm Locking Screw and Instrument Case	1
00-2360-011-01 3.5mm/2.7mm Locking Plate Reduction Instrument	2
00-2360-011-02 3.5mm/2.7mm Locking Plate Reduction Sleeve	2
00-2360-012-03 Plate Reduction Spin Knob	2
00-2360-020-20 2.0mm Standard Cannula	4
00-2360-020-27 2.7mm Standard Cannula	4
00-2360-021-16 1.6mm Standard Cannula	4
00-2360-033-16 1.6mm Standard Drill-Tip Guide Wire (5 per Box)	2 Bx
00-2360-040-35 3.5mm/2.7mm Locking Screw Standard Depth Gauge	1
00-2360-041-35 3.5mm Cannulated Locking Screw Depth Gauge	1
00-2360-053-27 2.7mm Locking Screw Tap	2
00-2360-053-35 3.5mm Locking Screw Tap	2
00-2360-054-35 3.5mm Cannulated Locking Screw Tap	2
00-2360-065-00 2.5mm Screwdriver Stop Ring	1
00-2360-065-25 2.5mm Hex Standard Screwdriver	2
00-2360-066-25 2.5mm Hex Standard Cannulated Screwdriver	2
00-2360-071-27 2.7mm Standard Cannulated Drill	2
00-2360-080-00 Torque-Limiting Attachment	1
00-2360-086-00 Modular Handle	1
00-2360-088-00 3.5mm/2.7mm Cannula Inserter	1
00-2360-175-20 2.0mm Standard Drill	2
00-2360-205-27 2.7mm Standard Drill	2
00-4812-045-00 Large Hex Screwdriver	1
00-2360-050-25 2.5mm Hex Forward Captive Screwdriver	0
00-2360-051-25 2.5mm Hex Cannulated Forward Captive Screwdriver	0

Compatible with:

Zimmer Periarticular 3.5mm Self-Tapping Cortical Screws; Zimmer Periarticular 4.0mm Cancellous Screws; Zimmer Small-Fragment Instrument Set; Zimmer Small-Fragment Screw Set

Distal Tibial Locking Plate Set

	Qty
00-2357-000-10 Distal Tibial Locking Plate Set (Contains the following)	
00-2357-008-06 Distal Medial Tibial Locking Plate, 6 Hole, 120mm Lng, Left	1
00-2357-008-08 Distal Medial Tibial Locking Plate, 8 Hole, 144mm Lng, Left	1
00-2357-008-10 Distal Medial Tibial Locking Plate, 10 Hole, 168mm Lng, Left	1
00-2357-008-14 Distal Medial Tibial Locking Plate, 14 Hole, 216mm Lng, Left	1
00-2357-008-18 Distal Medial Tibial Locking Plate, 18 Hole, 264mm Lng, Left	Loaner Bank
00-2357-007-06 Distal Medial Tibial Locking Plate, 6 Hole, 120mm Lng, Right	1
00-2357-007-08 Distal Medial Tibial Locking Plate, 8 Hole, 144mm Lng, Right	1
00-2357-007-10 Distal Medial Tibial Locking Plate, 10 Hole, 168mm Lng, Right	1
00-2357-007-14 Distal Medial Tibial Locking Plate, 14 Hole, 216mm Lng, Right	1
00-2357-007-18 Distal Medial Tibial Locking Plate, 18 Hole, 264mm Lng, Right	Loaner Bank
00-2357-010-06 Distal Lateral Tibial Locking Plate, 6 Hole, 94mm Lng, Left	1
00-2357-010-08 Distal Lateral Tibial Locking Plate, 8 Hole, 118mm Lng, Left	1
00-2357-010-10 Distal Lateral Tibial Locking Plate, 10 Hole, 142mm Lng, Left	1
00-2357-010-14 Distal Lateral Tibial Locking Plate, 14 Hole, 189mm Lng, Left	1
00-2357-010-18 Distal Lateral Tibial Locking Plate, 18 Hole, 237mm Lng, Left	Loaner Bank
00-2357-009-06 Distal Lateral Tibial Locking Plate, 6 Hole, 94mm Lng, Right	1
00-2357-009-08 Distal Lateral Tibial Locking Plate, 8 Hole, 118mm Lng, Right	1
00-2357-009-10 Distal Lateral Tibial Locking Plate, 10 Hole, 142mm Lng, Right	1
00-2357-009-14 Distal Lateral Tibial Locking Plate, 14 Hole, 189mm Lng, Right	1
00-2357-009-18 Distal Lateral Tibial Locking Plate, 18 Hole, 237mm Lng, Right	Loaner Bank

Distal Tibial Standard Jig Set

	Qty
00-2360-000-13 Distal Tibial Standard Jig Set (Contains the following)	
00-2360-094-01 Distal Medial Tibial Plate Jig, Right	1
00-2360-094-02 Distal Medial Tibial Plate Jig, Left	1
00-2360-095-01 Distal Lateral Tibial Plate Jig, Right	1
00-2360-095-02 Distal Lateral Tibial Plate Jig, Left	1
00-2358-020-00 Distal Tibial Plate and Jig Case	1

Screw and Instrument Sets

00-2360-000-02	3.5mm/2.7mm Periarticular Locking Instrument Set
00-2359-000-02	3.5mm/2.7mm Locking Screw Set



3.5mm/2.7mm Locking Screw Set

Item Number	Description	Qty
00-2359-030-36	3.5mm Cannulated Locking Screw 30mm Lng	3
00-2359-035-36	3.5mm Cannulated Locking Screw 35mm Lng	3
00-2359-040-36	3.5mm Cannulated Locking Screw 40mm Lng	3
00-2359-045-36	3.5mm Cannulated Locking Screw 45mm Lng	3
00-2359-050-36	3.5mm Cannulated Locking Screw 50mm Lng	4
00-2359-055-36	3.5mm Cannulated Locking Screw 55mm Lng	4
00-2359-060-36	3.5mm Cannulated Locking Screw 60mm Lng	4
00-2359-065-36	3.5mm Cannulated Locking Screw 65mm Lng	4
00-2359-070-36	3.5mm Cannulated Locking Screw 70mm Lng	4
00-2359-075-36	3.5mm Cannulated Locking Screw 75mm Lng	3
00-2359-080-36	3.5mm Cannulated Locking Screw 80mm Lng	3
00-2359-085-36	3.5mm Cannulated Locking Screw 85mm Lng	3
00-2359-090-36	3.5mm Cannulated Locking Screw 90mm Lng	3
00-2359-030-37	3.5mm Cannulated Conical Screw 30mm Lng	2
00-2359-035-37	3.5mm Cannulated Conical Screw 35mm Lng	2
00-2359-040-37	3.5mm Cannulated Conical Screw 40mm Lng	2
00-2359-045-37	3.5mm Cannulated Conical Screw 45mm Lng	2
00-2359-050-37	3.5mm Cannulated Conical Screw 50mm Lng	2
00-2359-055-37	3.5mm Cannulated Conical Screw 55mm Lng	2
00-2359-060-37	3.5mm Cannulated Conical Screw 60mm Lng	2
00-2359-065-37	3.5mm Cannulated Conical Screw 65mm Lng	2
00-2359-070-37	3.5mm Cannulated Conical Screw 70mm Lng	2
00-2359-012-35	3.5mm Locking Screw 12mm Lng	2
00-2359-014-35	3.5mm Locking Screw 14mm Lng	2
00-2359-016-35	3.5mm Locking Screw 16mm Lng	2
00-2359-018-35	3.5mm Locking Screw 18mm Lng	2
00-2359-020-35	3.5mm Locking Screw 20mm Lng	2
00-2359-022-35	3.5mm Locking Screw 22mm Lng	2
00-2359-024-35	3.5mm Locking Screw 24mm Lng	2
00-2359-026-35	3.5mm Locking Screw 26mm Lng	2
00-2359-028-35	3.5mm Locking Screw 28mm Lng	2
00-2359-030-35	3.5mm Locking Screw 30mm Lng	2
00-2359-032-35	3.5mm Locking Screw 32mm Lng	3
00-2359-034-35	3.5mm Locking Screw 34mm Lng	3
00-2359-036-35	3.5mm Locking Screw 36mm Lng	3
00-2359-038-35	3.5mm Locking Screw 38mm Lng	3
00-2359-040-35	3.5mm Locking Screw 40mm Lng	3
00-2359-042-35	3.5mm Locking Screw 42mm Lng	3

Item Number	Description	Qty
00-2359-044-35	3.5mm Locking Screw 44mm Lng	3
00-2359-046-35	3.5mm Locking Screw 46mm Lng	3
00-2359-048-35	3.5mm Locking Screw 48mm Lng	3
00-2359-050-35	3.5mm Locking Screw 50mm Lng	3
00-2359-052-35	3.5mm Locking Screw 52mm Lng	2
00-2359-054-35	3.5mm Locking Screw 54mm Lng	2
00-2359-056-35	3.5mm Locking Screw 56mm Lng	2
00-2359-058-35	3.5mm Locking Screw 58mm Lng	2
00-2359-060-35	3.5mm Locking Screw 60mm Lng	2
00-2359-065-35	3.5mm Locking Screw 65mm Lng	2
00-2359-070-35	3.5mm Locking Screw 70mm Lng	2
00-2359-010-27	2.7mm Locking Screw 10mm Lng	3
00-2359-012-27	2.7mm Locking Screw 12mm Lng	3
00-2359-014-27	2.7mm Locking Screw 14mm Lng	3
00-2359-016-27	2.7mm Locking Screw 16mm Lng	3
00-2359-018-27	2.7mm Locking Screw 18mm Lng	3
00-2359-020-27	2.7mm Locking Screw 20mm Lng	3
00-2359-022-27	2.7mm Locking Screw 22mm Lng	4
00-2359-024-27	2.7mm Locking Screw 24mm Lng	4
00-2359-026-27	2.7mm Locking Screw 26mm Lng	4
00-2359-028-27	2.7mm Locking Screw 28mm Lng	4
00-2359-030-27	2.7mm Locking Screw 30mm Lng	4
00-2359-032-27	2.7mm Locking Screw 32mm Lng	4
00-2359-034-27	2.7mm Locking Screw 34mm Lng	4
00-2359-036-27	2.7mm Locking Screw 36mm Lng	4
00-2359-038-27	2.7mm Locking Screw 38mm Lng	4
00-2359-040-27	2.7mm Locking Screw 40mm Lng	4
00-2359-042-27	2.7mm Locking Screw 42mm Lng	4
00-2359-044-27	2.7mm Locking Screw 44mm Lng	4
00-2359-046-27	2.7mm Locking Screw 46mm Lng	4
00-2359-048-27	2.7mm Locking Screw 48mm Lng	4
00-2359-050-27	2.7mm Locking Screw 50mm Lng	4
00-2359-052-27	2.7mm Locking Screw 52mm Lng	3
00-2359-054-27	2.7mm Locking Screw 54mm Lng	3
00-2359-056-27	2.7mm Locking Screw 56mm Lng	3
00-2359-058-27	2.7mm Locking Screw 58mm Lng	3
00-2359-060-27	2.7mm Locking Screw 60mm Lng	3

Ordering Information (continued)



PROXIMAL LATERAL TIBIAL LOCKING PLATES

3.5mm Proximal Lateral Tibial Locking Plates

Left	Right	Description	Holes	Length
00-2357-004-06	00-2357-003-06	3.5mm Proximal Lateral Tibial Locking Plate	6	104mm
00-2357-004-08	00-2357-003-08	3.5mm Proximal Lateral Tibial Locking Plate	8	128mm
00-2357-004-10	00-2357-003-10	3.5mm Proximal Lateral Tibial Locking Plate	10	152mm
00-2357-004-12	00-2357-003-12	3.5mm Proximal Lateral Tibial Locking Plate	12	176mm
00-2357-004-14	00-2357-003-14	3.5mm Proximal Lateral Tibial Locking Plate	14	200mm
00-2357-004-16	00-2357-003-16	3.5mm Proximal Lateral Tibial Locking Plate	16	224mm

3.5mm/2.7mm Periarticular Locking Instrument Set Qty

00-2360-000-02	3.5mm/2.7mm Periarticular Locking Instrument Set (Contains the following)	Qty
00-1147-071-00	Cleaning Stylet	1
00-1147-076-00	Cleaning Brush	1
00-2358-040-00	3.5mm/2.7mm Locking Screw and Instrument Case	1
00-2360-011-01	3.5mm/2.7mm Locking Plate Reduction Instrument	2
00-2360-011-02	3.5mm/2.7mm Locking Plate Reduction Sleeve	2
00-2360-012-03	Plate Reduction Spin Knob	2
00-2360-020-20	2.0mm Standard Cannula	4
00-2360-020-27	2.7mm Standard Cannula	4
00-2360-021-16	1.6mm Standard Cannula	4
00-2360-033-16	1.6mm Standard Drill-Tip Guide Wire (5 per Box)	2 Bx
00-2360-040-35	3.5mm/2.7mm Locking Screw Standard Depth Gauge	1
00-2360-041-35	3.5mm Cannulated Locking Screw Depth Gauge	1
00-2360-053-27	2.7mm Locking Screw Tap	2
00-2360-053-35	3.5mm Locking Screw Tap	2
00-2360-054-35	3.5mm Cannulated Locking Screw Tap	2
00-2360-065-00	2.5mm Screwdriver Stop Ring	1
00-2360-065-25	2.5mm Hex Standard Screwdriver	2
00-2360-066-25	2.5mm Hex Standard Cannulated Screwdriver	2
00-2360-071-27	2.7mm Standard Cannulated Drill	2
00-2360-080-00	Torque-Limiting Attachment	1
00-2360-086-00	Modular Handle	1
00-2360-088-00	3.5mm/2.7mm Cannula Insert	1
00-2360-175-20	2.0mm Standard Drill	2
00-2360-205-27	2.7mm Standard Drill	2
00-4812-045-00	Large Hex Screwdriver	1
00-2360-050-25	2.5mm Hex Forward Captive Screwdriver	0
00-2360-051-25	2.5mm Hex Cannulated Forward Captive Screwdriver	0

3.5mm Proximal Lateral Tibial Locking Plate Set Qty

00-2357-000-09	Proximal Lateral Tibial Locking Plate Set (Contains the following)	Qty
00-2357-004-06	3.5mm Proximal Lateral Tibial Locking Plate, 6 Hole, Left	1
00-2357-004-08	3.5mm Proximal Lateral Tibial Locking Plate, 8 Hole, Left	1
00-2357-004-10	3.5mm Proximal Lateral Tibial Locking Plate, 10 Hole, Left	1
00-2357-004-12	3.5mm Proximal Lateral Tibial Locking Plate, 12 Hole, Left	1
00-2357-004-14	3.5mm Proximal Lateral Tibial Locking Plate, 14 Hole, Left	1
00-2357-004-16	3.5mm Proximal Lateral Tibial Locking Plate, 16 Hole, Left	1
00-2357-003-06	3.5mm Proximal Lateral Tibial Locking Plate, 6 Hole, Right	1
00-2357-003-08	3.5mm Proximal Lateral Tibial Locking Plate, 8 Hole, Right	1
00-2357-003-10	3.5mm Proximal Lateral Tibial Locking Plate, 10 Hole, Right	1
00-2357-003-12	3.5mm Proximal Lateral Tibial Locking Plate, 12 Hole, Right	1
00-2357-003-14	3.5mm Proximal Lateral Tibial Locking Plate, 14 Hole, Right	1
00-2357-003-16	3.5mm Proximal Lateral Tibial Locking Plate, 16 Hole, Right	1

3.5mm Proximal Tibial Standard Jig Set Qty

00-2360-000-15	3.5mm Proximal Tibial Standard Jig Set (Contains the following)	Qty
00-2360-093-01	3.5mm Proximal Lateral Tibial Plate Jig, Right	1
00-2360-093-02	3.5mm Proximal Lateral Tibial Plate Jig, Left	1
00-2358-050-00	3.5mm Proximal Lateral Tibial Plate and Jig Case	1

Screw and Instrument Sets

00-2360-000-02	3.5mm/2.7mm Periarticular Locking Instrument Set
00-2359-000-02	3.5mm/2.7mm Locking Screw Set

Compatible with:

Zimmer Periarticular 3.5mm Self-Tapping Cortical Screws; *Zimmer* Periarticular 4.0mm Cancellous Screws; *Zimmer* Small-Fragment Instrument Set; *Zimmer* Small-Fragment Screw Set



3.5mm/2.7mm Locking Screw Set

Item Number	Description	Qty
00-2359-030-36	3.5mm Cannulated Locking Screw 30mm Lng	3
00-2359-035-36	3.5mm Cannulated Locking Screw 35mm Lng	3
00-2359-040-36	3.5mm Cannulated Locking Screw 40mm Lng	3
00-2359-045-36	3.5mm Cannulated Locking Screw 45mm Lng	3
00-2359-050-36	3.5mm Cannulated Locking Screw 50mm Lng	4
00-2359-055-36	3.5mm Cannulated Locking Screw 55mm Lng	4
00-2359-060-36	3.5mm Cannulated Locking Screw 60mm Lng	4
00-2359-065-36	3.5mm Cannulated Locking Screw 65mm Lng	4
00-2359-070-36	3.5mm Cannulated Locking Screw 70mm Lng	4
00-2359-075-36	3.5mm Cannulated Locking Screw 75mm Lng	3
00-2359-080-36	3.5mm Cannulated Locking Screw 80mm Lng	3
00-2359-085-36	3.5mm Cannulated Locking Screw 85mm Lng	3
00-2359-090-36	3.5mm Cannulated Locking Screw 90mm Lng	3
00-2359-030-37	3.5mm Cannulated Conical Screw 30mm Lng	2
00-2359-035-37	3.5mm Cannulated Conical Screw 35mm Lng	2
00-2359-040-37	3.5mm Cannulated Conical Screw 40mm Lng	2
00-2359-045-37	3.5mm Cannulated Conical Screw 45mm Lng	2
00-2359-050-37	3.5mm Cannulated Conical Screw 50mm Lng	2
00-2359-055-37	3.5mm Cannulated Conical Screw 55mm Lng	2
00-2359-060-37	3.5mm Cannulated Conical Screw 60mm Lng	2
00-2359-065-37	3.5mm Cannulated Conical Screw 65mm Lng	2
00-2359-070-37	3.5mm Cannulated Conical Screw 70mm Lng	2
00-2359-012-35	3.5mm Locking Screw 12mm Lng	2
00-2359-014-35	3.5mm Locking Screw 14mm Lng	2
00-2359-016-35	3.5mm Locking Screw 16mm Lng	2
00-2359-018-35	3.5mm Locking Screw 18mm Lng	2
00-2359-020-35	3.5mm Locking Screw 20mm Lng	2
00-2359-022-35	3.5mm Locking Screw 22mm Lng	2
00-2359-024-35	3.5mm Locking Screw 24mm Lng	2
00-2359-026-35	3.5mm Locking Screw 26mm Lng	2
00-2359-028-35	3.5mm Locking Screw 28mm Lng	2
00-2359-030-35	3.5mm Locking Screw 30mm Lng	2
00-2359-032-35	3.5mm Locking Screw 32mm Lng	3
00-2359-034-35	3.5mm Locking Screw 34mm Lng	3
00-2359-036-35	3.5mm Locking Screw 36mm Lng	3
00-2359-038-35	3.5mm Locking Screw 38mm Lng	3
00-2359-040-35	3.5mm Locking Screw 40mm Lng	3
00-2359-042-35	3.5mm Locking Screw 42mm Lng	3

Item Number	Description	Qty
00-2359-044-35	3.5mm Locking Screw 44mm Lng	3
00-2359-046-35	3.5mm Locking Screw 46mm Lng	3
00-2359-048-35	3.5mm Locking Screw 48mm Lng	3
00-2359-050-35	3.5mm Locking Screw 50mm Lng	3
00-2359-052-35	3.5mm Locking Screw 52mm Lng	2
00-2359-054-35	3.5mm Locking Screw 54mm Lng	2
00-2359-056-35	3.5mm Locking Screw 56mm Lng	2
00-2359-058-35	3.5mm Locking Screw 58mm Lng	2
00-2359-060-35	3.5mm Locking Screw 60mm Lng	2
00-2359-065-35	3.5mm Locking Screw 65mm Lng	2
00-2359-070-35	3.5mm Locking Screw 70mm Lng	2
00-2359-010-27	2.7mm Locking Screw 10mm Lng	3
00-2359-012-27	2.7mm Locking Screw 12mm Lng	3
00-2359-014-27	2.7mm Locking Screw 14mm Lng	3
00-2359-016-27	2.7mm Locking Screw 16mm Lng	3
00-2359-018-27	2.7mm Locking Screw 18mm Lng	3
00-2359-020-27	2.7mm Locking Screw 20mm Lng	3
00-2359-022-27	2.7mm Locking Screw 22mm Lng	4
00-2359-024-27	2.7mm Locking Screw 24mm Lng	4
00-2359-026-27	2.7mm Locking Screw 26mm Lng	4
00-2359-028-27	2.7mm Locking Screw 28mm Lng	4
00-2359-030-27	2.7mm Locking Screw 30mm Lng	4
00-2359-032-27	2.7mm Locking Screw 32mm Lng	4
00-2359-034-27	2.7mm Locking Screw 34mm Lng	4
00-2359-036-27	2.7mm Locking Screw 36mm Lng	4
00-2359-038-27	2.7mm Locking Screw 38mm Lng	4
00-2359-040-27	2.7mm Locking Screw 40mm Lng	4
00-2359-042-27	2.7mm Locking Screw 42mm Lng	4
00-2359-044-27	2.7mm Locking Screw 44mm Lng	4
00-2359-046-27	2.7mm Locking Screw 46mm Lng	4
00-2359-048-27	2.7mm Locking Screw 48mm Lng	4
00-2359-050-27	2.7mm Locking Screw 50mm Lng	4
00-2359-052-27	2.7mm Locking Screw 52mm Lng	3
00-2359-054-27	2.7mm Locking Screw 54mm Lng	3
00-2359-056-27	2.7mm Locking Screw 56mm Lng	3
00-2359-058-27	2.7mm Locking Screw 58mm Lng	3
00-2359-060-27	2.7mm Locking Screw 60mm Lng	3

Contact your Zimmer representative or visit us at www.zimmer.com

