

# PerFuse Percutaneous Core Decompression Instrument



Figure 1



Figure 2



Figure 3

## Assembly

Step 1: Fully seat the disposable PerFuse cannula into the PerFuse handle's quick connect (Figure 1).

Step 2: Introduce the PerFuse disposable trocar through the back of the reusable handle (Figure 2).

Step 3: Tighten the screw cap on the back of the reusable handle to lock the trocar in place. The PerFuse instrument is now fully assembled (Figure 3).

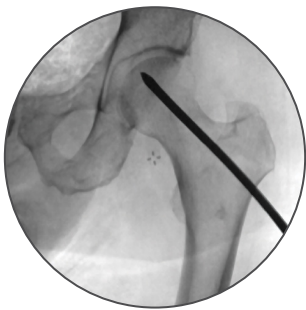


Figure 4

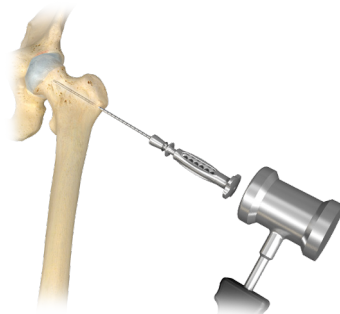


Figure 5

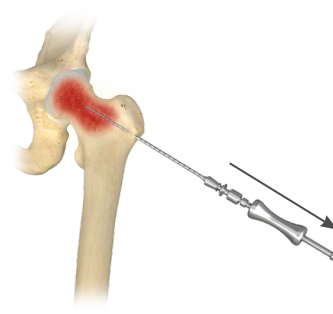


Figure 6



Figure 7

## Instrument Use

After determining desired orientation and anatomical location, mallet the fully assembled instrument until it has reached the desired depth (Figures 4 and 5).

## Instrument Removal

If possible, manually remove the trephine. If a mechanical advantage is needed, the PerFuse Slide Hammer can be used to aid removal. To assemble, thread the Slide Hammer into the screw cap of the reusable handle.

Please note, when the Slide Hammer is attached to the Slide Hammer Adapter, ensure the flat end of the Hammer faces toward the Slide Hammer Adapter to avoid interference from the adapter (Figure 6).

The Slide Hammer assembly can also be attached directly to the cannula after the reusable handle has been removed via the Slide Hammer Adapter (Figure 6).

# PerFuse Percutaneous Core Decompression Instrument



## PerFuse Part Numbers

800-0541	Hip Disposable Instrument Set
800-0542	Small Joint Disposable Instrument Set
800-0543	Slide Hammer Adapter
800-0544	Handle Strike Cap
800-0545	Handle
800-0546	PerFuse Instrument Case
31-473621	Slide Hammer
959300	PerFuse Instrument Loaner Set: Slide Hammer Adapter (Qty 1) Handle Strike Cap (Qty 2) Handle (Qty 2) PerFuse Instrument Case (Qty 1) Slide Hammer (Qty 1)
959600	Implants Loaner Set: Hip Disposable Instrument Set (Qty 3) Small Joint Disposable Instrument Set (Qty 3)

All trademarks herein are the property of Biomet, Inc. or its subsidiaries unless otherwise indicated.

This material is intended for the sole use and benefit of the Biomet sales force and physicians. It is not to be redistributed, duplicated or disclosed without the express written consent of Biomet.

For product information, including Indications for Use, Contraindications, Warnings, Precautions and Possible Adverse Effects, see the package insert, and Patient Risk Information at [www.biomet.com](http://www.biomet.com).

©2017 Zimmer Biomet



**ZIMMER BIOMET**  
Your progress. Our promise.®

1666.1-GLBL-en-REV1017



**Responsible Manufacturer**  
Biomet Biologics  
P.O. Box 587  
56 E. Bell Drive  
Warsaw, Indiana 46581-0587  
USA

[www.zimmerbiomet.com](http://www.zimmerbiomet.com)